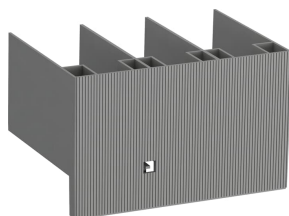


PRODUCT-DETAILS

LT300-AL

LT300-AL Terminal Shroud



General Information

Extended Product Type	LT300-AL
Product ID	1SFN125103R1000
EAN	7320500203934
Catalog Description	LT300-AL Terminal Shroud
Long Description	Protection for main terminals achieving finger protection from life parts. For Contactors A210...A300 incombination with lugs

Technical

Product Name	Terminal Shroud
Suitable For	A210 A260 A300
Suitable for Product Class	Block Contactors
Terminal Type	Screw Terminals

Environmental

RoHS Status	Following EU Directive 2011/65/EU
Environmental Information	1SFC101010D0201

Dimensions

Product Net Width	140 mm
Product Net Height	100 mm
Product Net Depth / Length	86.2 mm
Product Net Weight	0.28 kg

Container Information

Package Level 1 Units	bag 1 piece
Package Level 1 Width	140 mm
Package Level 1 Height	86.2 mm
Package Level 1 Depth / Length	100 mm
Package Level 1 Gross Weight	0.32 kg
Package Level 1 EAN	7320500203934

Ordering

Minimum Order Quantity	1 piece
Customs Tariff Number	85389099
E-Number (Finland)	3801111
E-Number (Norway)	4120303
E-Number (Sweden)	3228929
Country of Origin	Sweden (SE)
Selling Unit of Measure	piece

Certificates and Declarations (Document Number)

Declaration of Conformity - CE	2CMT005321
Environmental Information	1SFC101010D0201
Instructions and Manuals	N/A
RoHS Information	2CMT005321

Popular Downloads

Data Sheet, Technical Information	1SBC100122C0202
Instructions and Manuals	N/A

Classifications

ETIM 6	EC002498 - Accessories for low-voltage switch technology
ETIM 7	EC002498 - Accessories for low-voltage switch technology
ETIM 8	EC002498 - Accessories/spare parts for low-voltage switch technology

WEEE Category	Product Not in WEEE Scope
WEEE B2C / B2B	Business To Business
CN8	8538 90 99
UNSPSC	43171815
Object Classification Code	X

Categories

Low Voltage Products and Systems → Control Products → Contactors → Block Contactors Accessories

