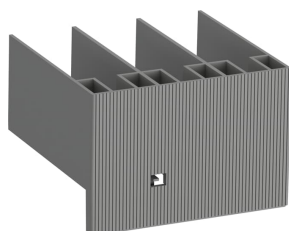


PRODUCT-DETAILS

LT205-30L

LT205-30L Terminal Shroud



General Information

Extended Product Type	LT205-30L
Product ID	1SFN124803R1000
EAN	7320500481486
Catalog Description	LT205-30L Terminal Shroud
Long Description	Terminal shrouds, long, 3-pole AF190-AF205

Technical

Fire and Smoke Standards	EN 45545 (Hazard levels HL2, HL3)
Product Name	Terminal Shroud
Suitable For	AF190 AF205 AF190B AF205B
Suitable for Product Class	Block Contactors
Terminal Type	Screw Terminals

Environmental

RoHS Status	Following EU Directive 2011/65/EU
Environmental Information	2CMT004732

Dimensions

Product Net Width	104.6 mm
Product Net Height	100.7 mm
Product Net Depth / Length	69.7 mm
Product Net Weight	0.22 kg

Container Information

Package Level 1 Units	bag 1 piece
Package Level 1 Width	104.6 mm
Package Level 1 Height	69.7 mm
Package Level 1 Depth / Length	100.7 mm
Package Level 1 Gross Weight	0.24 kg
Package Level 1 EAN	7320500481486

Ordering

Minimum Order Quantity	1 piece
Customs Tariff Number	85389099
E-Number (Finland)	3706570
E-Number (Norway)	4117849
E-Number (Sweden)	3210188
Country of Origin	Sweden (SE)
Selling Unit of Measure	piece

Certificates and Declarations (Document Number)

cUL Certificate	20120925-E36588
Declaration of Conformity - CE	2CMT004895
Environmental Information	2CMT004732
Instructions and Manuals	1SFC100015M0201
RoHS Information	2CMT004895

Popular Downloads

Data Sheet, Technical Information	1SBC100173C0201
Instructions and Manuals	1SFC100015M0201

Classifications

ETIM 6	EC002498 - Accessories for low-voltage switch technology
ETIM 7	EC002498 - Accessories for low-voltage switch technology
ETIM 8	EC002498 - Accessories/spare parts for low-voltage switch technology
EPLAN Catalog Tree	Electrical engineering / Terminals / General
WEEE Category	Product Not in WEEE Scope
WEEE B2C / B2B	Business To Business
CN8	8538 90 99

UNSPSC	39121529
eClass	V11.0 : 27371003
Object Classification Code	F

Categories

Low Voltage Products and Systems → Control Products → Contactors → Block Contactors Accessories

