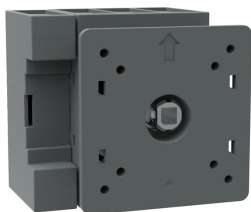


PRODUCT-DETAILS

OT63FT4N2

OT63FT4N2 SWITCH-DISCONNECTOR



General Information

Extended Product Type	OT63FT4N2
Product ID	1SCA105393R1001
EAN	6417019393285
Catalog Description	OT63FT4N2 SWITCH-DISCONNECTOR
Long Description	4-pole, front operated, door mounted switch-diconnector / non-fusible diconnect switch with protected clamp terminals, handle is not included

Ordering

Minimum Order Quantity	10 piece
Customs Tariff Number	85365080
Country of Origin	Finland (FI)

Popular Downloads

Data Sheet, Technical Information	1SCC301020C0201
Instructions and Manuals	1SCC301063M0006
Mechanical Drawings	1SCC301456F0001 1SCC301455F0001 OT63-80FT4N2

Dimensions

Product Net Width	65 mm
Product Net Height	72 mm
Product Net Depth / Length	69 mm
Product Net Weight	0.32 kg

Technical

Rated Operational Current AC-21A (I_e)	(380 ... 415 V) 63 A (500 V) 63 A (690 V) 63 A
Rated Operational Current AC-22A (I_e)	(380 ... 415 V) 63 A (500 V) 63 A (690 V) 63 A
Rated Operational Current AC-23A (I_e)	(380 ... 415 V) 63 A (500 V) 45 A (690 V) 20 A
Rated Operational Power AC-23A (P_e)	(220 ... 240 V) 11 kW (400 ... 415 V) 22 kW (500 V) 22 kW (690 V) 15 kW
Conventional Free-air Thermal Current (I_{th})	q = 40 °C 63 A
Conventional Thermal Current (I_{the})	Fully Enclosed 63 A
Rated Impulse Withstand Voltage (U_{imp})	8 kV
Rated Insulation Voltage (U_i)	acc. to IEC/EN 60664-1 750 V
Rated Operational Voltage	Main Circuit 750 V
Rated Short-Circuit Making Capacity (I_{cm})	(690 V) 2.1 kA
Rated Short-time Withstand Current (I_{cw})	for 1 s 1.5 kA
Power Loss	at Rated Operating Conditions per Pole 2.8 W
Pollution Degree	3
Handle Type	Handle and shaft not included
Fourth Pole Position	Right Side
Fourth Pole Type	Switched - Simultaneous Function
Switches Operating Mechanism	Mechanism on Top of the Switch
Distance Between Phases	Standard
Position of Line Terminals	Top In - Bottom Out Bottom In - Top Out
Operating Mode	Front operated
Standards	IEC 60947-3 / UL 508 / CSA C22.2 No. 14
Special Functions	No
Mounting Type	Door mounting
Number of Poles	4
Cable Cross-Section	Cu 1.5...35 mm ²
Degree of Protection	Front IP20
Terminal Type	Screw Terminals
Tightening Torque	acc. IEC 60947-1 2 N·m
Mechanical Durability	20000
Lock Type	No

Technical UL/CSA

Maximum Operating Voltage UL/CSA	600 V
Horsepower Rating UL/CSA	(110 ... 120 V AC) Single Phase 2 Hp (240 V AC) Single Phase 7.5 Hp (440 ... 480 V AC) Single Phase 15 Hp (550 ... 600 V AC) Single Phase 15 Hp (220 ... 240 V AC) Three Phase 15 Hp (440 ... 480 V AC) Three Phase 30 Hp (550 ... 600 V AC) Three Phase 30 Hp
Ampere Rating UL/CSA	60 A
Tightening Torque UL/CSA	18 in-lb

Environmental

RoHS Status	Following EU Directive 2011/65/EU
Environmental Information	1SCC301183D0201

Certificates and Declarations (Document Number)

Declaration of Conformity - CE	1SCC301167D2704
Environmental Information	1SCC301183D0201
Instructions and Manuals	1SCC301063M0006
RoHS Information	1SCC301183D0202
UL Certificate	cULus certificate OT16-80

Container Information

Package Level 1 Units	box 1 piece
Package Level 1 Width	80 mm
Package Level 1 Depth / Length	84 mm
Package Level 1 Height	88 mm
Package Level 1 Gross Weight	0.34 kg
Package Level 1 EAN	6417019393285

Classifications

Object Classification Code	Q
ETIM 5	EC000216 - Switch disconnecter
ETIM 6	EC000216 - Switch disconnecter
ETIM 7	EC000216 - Switch disconnecter
ETIM 8	EC000216 - Switch disconnecter
UNSPSC	39122233
WEEE Category	5. Small Equipment (No External Dimension More Than 50 cm)
E-Number (Finland)	3601456
E-Number (Sweden)	3171085

Categories

Low Voltage Products and Systems → Switches → Switch Disconnectors

