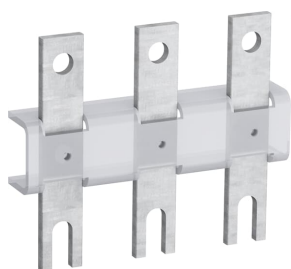


PRODUCT-DETAILS

# LX750

## LX750 Terminal Extension



### General Information

Extended Product Type	LX750
Product ID	1SFN076110R1000
EAN	7320500222355
Catalog Description	LX750 Terminal Extension
Long Description	3 pole extension kit designed to extend the main terminals

### Technical

Product Name	Terminal Extension
Suitable For	AF580 AF750
Suitable for Product Class	Block Contactors
Terminal Type	Screw Terminals

### Environmental

RoHS Status	Following EU Directive 2011/65/EU
Environmental Information	1SFC101009D0201

### Dimensions

Product Net Width	186 mm
Product Net Height	100 mm
Product Net Depth / Length	72 mm
Product Net Weight	0.85 kg

### Container Information

Package Level 1 Units	box 1 piece
Package Level 1 Width	211 mm
Package Level 1 Height	130 mm
Package Level 1 Depth / Length	51 mm
Package Level 1 Gross Weight	0.95 kg
Package Level 1 EAN	7320500222355

### Ordering

Minimum Order Quantity	1 piece
Customs Tariff Number	85369001
E-Number (Finland)	3709287
E-Number (Norway)	4115501
E-Number (Sweden)	3228920
Country of Origin	Sweden (SE)
Selling Unit of Measure	piece

### Certificates and Declarations (Document Number)

cUL Certificate	20120925-E36588
Declaration of Conformity - CE	2CMT005309
Environmental Information	1SFC101009D0201
Instructions and Manuals	1SFC380032-89
RoHS Information	2CMT005309

### Popular Downloads

Data Sheet, Technical Information	1SBC100122C0202
Instructions and Manuals	1SFC380032-89

### Classifications

ETIM 6	EC002498 - Accessories for low-voltage switch technology
ETIM 7	EC002498 - Accessories for low-voltage switch technology
ETIM 8	EC002498 - Accessories/spare parts for low-voltage switch technology
EPLAN Catalog Tree	Electrical engineering / Terminals / General
WEEE Category	5. Small Equipment (No External Dimension More Than 50 cm)
WEEE B2C / B2B	Business To Business
CN8	8536 90 01
UNSPSC	43171815
Object Classification Code	X

---

## Categories

---

Low Voltage Products and Systems → Control Products → Contactors → Block Contactors Accessories

