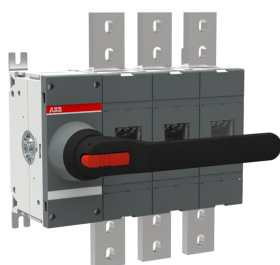


PRODUCT-DETAILS

# OT1600E03K

## OT1600E03K SWITCH-DISCONNECTOR



### General Information

Extended Product Type	OT1600E03K
Product ID	1SCA108352R1001
EAN	6417019416748
Catalog Description	OT1600E03K SWITCH-DISCONNECTOR
Long Description	3-pole, front operated, base mounted switch-diconductor with black direct mount handle, terminal bolt kit included

### Ordering

Minimum Order Quantity	1 piece
Customs Tariff Number	85365080
Country of Origin	Finland (FI)

### Popular Downloads

Data Sheet, Technical Information	1SCC301020C0201
Instructions and Manuals	1SCC301047M0213
Mechanical Drawings	1SCC301725F0002 1SCC301724F0002

## Dimensions

Product Net Width	334.5 mm
Product Net Height	372 mm
Product Net Depth / Length	237.5 mm
Product Net Weight	17.7 kg

## Technical

Rated Operational Current AC-21A ( $I_e$ )	(380 ... 415 V) 1600 A (500 V) 1600 A (690 V) 1600 A (1000 V) 1600 A
Rated Operational Current AC-22A ( $I_e$ )	(380 ... 415 V) 1600 A (500 V) 1600 A (690 V) 1600 A
Rated Operational Current AC-23A ( $I_e$ )	(380 ... 415 V) 1250 A (500 V) 1250 A (690 V) 1250 A
Rated Operational Power AC-23A ( $P_e$ )	(400 ... 415 V) 710 kW (500 V) 900 kW (690 V) 1200 kW
Conventional Free-air Thermal Current ( $I_{th}$ )	q = 40 °C 1600 A
Conventional Thermal Current ( $I_{the}$ )	Fully Enclosed 1600 A
Rated Impulse Withstand Voltage ( $U_{imp}$ )	12 kV
Rated Insulation Voltage ( $U_i$ )	acc. to IEC/EN 60664-1 1000 V
Rated Operational Voltage	Main Circuit 1000 V
Rated Short-Circuit Making Capacity ( $I_{cm}$ )	(690 V) 110 kA
Rated Short-time Withstand Current ( $I_{cw}$ )	for 1 s 50 kA
Power Loss	at Rated Operating Conditions per Pole 48 W
Pollution Degree	3
Handle Color	Black
Handle Type	Direct mounted pistol type handle
Switches Operating Mechanism	Mechanism at the End of the Switch 03 (Left Side)
Distance Between Phases	Standard
Position of Line Terminals	Top In - Bottom Out Bottom In - Top Out
Operating Mode	Front operated
Standards	IEC 60947-3
Special Functions	No
Mounting Type	Base mounting
Number of Poles	3
Degree of Protection	Front IP00
Terminal Type	Lug terminals

Tightening Torque	acc. IEC 60947-1 50...75 N·m
Mechanical Durability	6000
Lock Type	Yes

---

## Environmental

RoHS Status	Following EU Directive 2011/65/EU
Environmental Information	1SCC301149D0202

---

## Certificates and Declarations (Document Number)

Declaration of Conformity - CE	1SCC301155D2704
DNV GL Certificate	1SCC301184D0203
Environmental Information	1SCC301149D0202
Instructions and Manuals	1SCC301047M0213
RoHS Information	1SCC301149D0203

---

## Container Information

Package Level 1 Units	box 1 piece
Package Level 1 Width	400 mm
Package Level 1 Depth / Length	400 mm
Package Level 1 Height	325 mm
Package Level 1 Gross Weight	19.4 kg
Package Level 1 EAN	6417019416748

---

## Classifications

Object Classification Code	Q
ETIM 5	EC000216 - Switch disconnecter
ETIM 6	EC000216 - Switch disconnecter
ETIM 7	EC000216 - Switch disconnecter
ETIM 8	EC000216 - Switch disconnecter
WEEE Category	5. Small Equipment (No External Dimension More Than 50 cm)
E-Number (Finland)	3660818

---

## Categories

Low Voltage Products and Systems → Switches → Switch Disconnectors

