



RF38
Motor protection
relay

Product designation

Product type designation

General characteristics

| | | |
|-------------------------|----------|---------------------|
| Number of poles | nr. | 3 |
| Overvoltage category | | III |
| Pollution degree | | 3 |
| Frontal IP degree | | IP20 |
| Type of release | | Thermal |
| Protection fuse | | |
| | gG (IEC) | A 16 |
| | aM (IEC) | A 8 |
| | RK5 (UL) | A 25 |
| Phase failure detection | | Yes |
| Reset mode | | manual or automatic |

Power circuit characteristics

| | | |
|---|-------------------------|--------|
| Rated insulation voltage U_i IEC/EN | V | 690 |
| Rated impulse withstand voltage U_{imp} | kV | 6 |
| Rated operational voltage | V | 690 |
| Operational frequency | | |
| | min | Hz 0 |
| | max | Hz 400 |
| Operational current I_e | | |
| | Operational current min | A 4 |
| | Operational current max | A 6.5 |
| Tripping class | | 10A |
| Test Button | | yes |
| Trip indicator | | yes |

| | | | |
|-----------|-------|----|------------------|
| Terminals | | | |
| | type | | screw and washer |
| | screw | | M4 |
| | width | mm | 12.6 |
| | tool | | Phillips 2 |

| | | | |
|---------------------------------|-----|------|-----|
| Tightening torque for terminals | | | |
| | min | Nm | 2 |
| | Max | Nm | 2.5 |
| | min | lbin | 1.5 |
| | max | lbin | 1.8 |

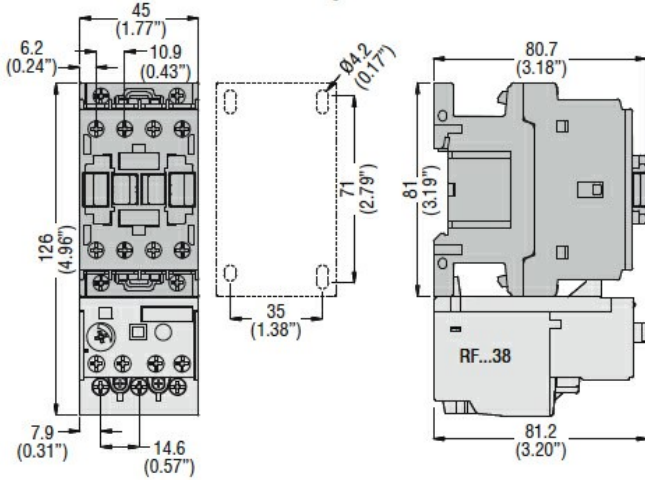
| | | |
|-------------------|---------------|---|
| Conductor section | | |
| | AWG/kcmil max | 8 |

Auxiliary circuit characteristics

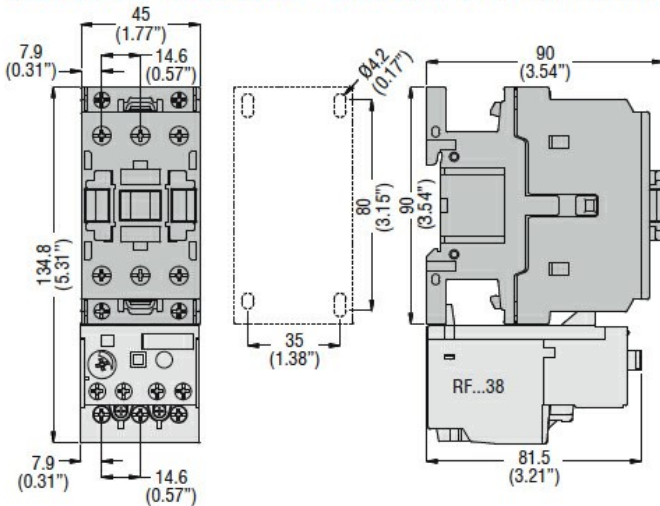
| | | |
|--------------------|----|-------|
| Auxiliary contacts | | |
| | NO | nr. 1 |

| | | | |
|---|--|-----------------|--------------------|
| | NC | nr. | 1 |
| Auxiliary Rated insulation voltage U_i IEC/EN | | V | 690 |
| Auxiliary Rated impulse withstand voltage U_{imp} | | kV | 6 |
| Auxiliary Rated operational voltage | | V | 690 |
| Operating current AC15 | | | |
| | 24V | A | 3 |
| | 120V | A | 3 |
| | 240V | A | 1.5 |
| | 380V | A | 0.95 |
| | 480V | A | 0.75 |
| | 500V | A | 0.72 |
| | 600V | A | 0.6 |
| Operating current DC13 | | | |
| | 125V | A | 0.11 |
| | 600V | A | 0.22 |
| IEC Conventional free air thermal current I_{th} | | A | 10 |
| Terminals | | | |
| | Auxiliary circuit type | | screw and washer |
| | Auxiliary circuit screw | | M3,5 |
| | Auxiliary circuit width | mm | 8 |
| | Auxiliary circuit tool | | Phillips 2 |
| Conductor section | | | |
| | Auxiliary circuit Flexible w/o lug max | mm ² | 2.5 |
| | Auxiliary circuit Flexible c/w lug max | mm ² | 2.5 |
| Tightening torque for terminals | | | |
| | Auxiliary circuit min | Nm | 0.8 |
| | Auxiliary circuit max | Nm | 1 |
| | Auxiliary circuit min | lbin | 0.59 |
| | Auxiliary circuit max | lbin | 0.74 |
| UL/CSA and IEC/EN 60947-5-1 designation | | | B600-R300 |
| Ambient conditions | | | |
| Operating temperature | | | |
| | min | °C | -25 |
| | max | °C | 60 |
| Storage temperature | | | |
| | min | °C | -50 |
| | max | °C | 70 |
| Compensation temperature | | | |
| | min | °C | -20 |
| | max | °C | 60 |
| Max altitude | | m | 3000 |
| Mechanical features | | | |
| Operating position | | | |
| | normal allowable | | Vertical plan ±30° |
| Weight | | g | 160 |
| UL technical data | | | |
| Full-load current (FLA) for three-phase AC motor | | | |
| | at 480V | A | 6.5 |
| | at 600V | A | 6.5 |
| Dimensions | | | |

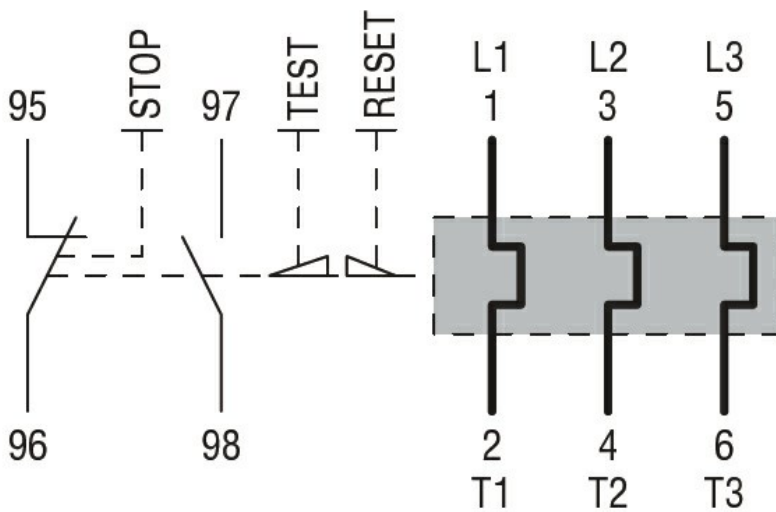
BF00 A... BF09 A... - BF12 A... - BF18 A... - BF25 A... three poles with **RF...38** thermal overload relay



BF26 00A... - BF32 00A... - BF38 00A... three poles with **RF...38** thermal overload relay



Wiring diagrams



Certifications and compliance

Compliance

CSA C22.2 n° 14

IEC/EN 60947-1

IEC/EN 60947-4-1

Certifications

UL508

CCC

cULus

EAC