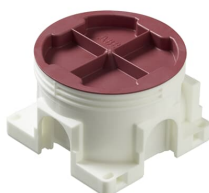


PRODUCT-DETAILS

AU3.2

AU3.2 Mounting box



General Information

Extended Product Type	AU3.2
Product ID	2TKA130029G1
EAN	6410011523643
Catalog Description	AU3.2 Mounting box

Long Description

The mounting box is designed for installation in all new buildings and in prefabricated building elements, and can be used with cast materials. It has a total of five knock-out inlets, two of which are on the same side. The bottom of the box provides access for two rear inlets. The boxes can be connected to each other with the PMR474 interconnector. Made of halogen free material (IEC/61249-2-21) and fulfills the requirements of the glow wire test according to the standard IEC/EN60670: 2005 (850 °C).

Technical

Product Name	Mounting box
Number of Poles	0
Number of Conduit Inlets	0
Number of Gangs	1
Number of Inlet Inserts Included	0
Design	Device connection box (round/square)
Cover Mounting Type	Snap On
Mounting Type	Flush mounted (plaster)
Switching Equipment Mounting Type	Screw

Shape	Round
Surface Finishing	Untreated
Material	Plastic
Model Number	Single
Color	White

Dimensions

Product Net Width	0.071 m
Product Net Height	0.047 m
Product Net Depth / Length	71 mm
Product Net Weight	0.0324 kg

Container Information

Package Level 1 Units	box 100 piece
Package Level 1 Width	0.4 m
Package Level 1 Height	0.26 m
Package Level 1 Depth / Length	0.4 m
Package Level 1 Gross Weight	3.44 kg
Package Level 1 EAN	6410011523643
Package Level 3 Units	pallet (lift) 2400 piece
Package Level 3 Width	1.2 m
Package Level 3 Height	1.1 m
Package Level 3 Depth / Length	0.8 m
Package Level 3 Gross Weight	82.56 kg

Ordering

Minimum Order Quantity	100 piece
Customs Tariff Number	39259080
E-Number (Finland)	1152364
E-Number (Sweden)	1422306
Country of Origin	Finland (FI)
Selling Unit of Measure	piece

Certificates and Declarations (Document Number)

Declaration of Conformity - CE	9AKK106713A4627
Instructions and Manuals	9AKK10103A2549
RoHS Information	9AKK106713A4634

Popular Downloads

Data Sheet, Technical Information	9AKK10103A2549
Instructions and Manuals	9AKK10103A2549

Classifications

ETIM 6	EC002601 - Box/housing for built-in mounting in the wall/ceiling
ETIM 7	EC002601 - Box/housing for built-in mounting in the wall/ceiling
ETIM 8	EC002601 - Box/housing for built-in mounting in the wall/ceiling
WEEE Category	Product Not in WEEE Scope

Categories

Low Voltage Products and Systems → Installation Materials → Flush Mounted Boxes → Plastic Installation Boxes (for WA Inserts)
 → Hollow Wall

