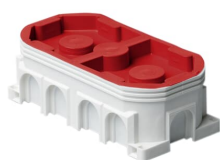


PRODUCT-DETAILS

AU17.2

AU17.2 Double mounting box



General Information

Extended Product Type	AU17.2
Product ID	2TKA130026G1
EAN	6410011523896
Catalog Description	AU17.2 Double mounting box
Long Description	<p>The box AU17.2 has knock-outs for 11 inlets on the side, and 6 on the bottom. It can accommodate a device with a triple inlet. _x000D_ If necessary, the box may be divided in two by using partition plate PMR345. Made of halogen free material (IEC/61249-2-21) and fulfills the requirements of the glow wire test according to the standard IEC/EN60670: 2005 (850 °C).</p>

Technical

Product Name	Double mounting box
Number of Poles	0
Number of Conduit Inlets	0
Number of Gangs	1
Number of Inlet Inserts Included	0
Design	Device connection box (round/square)
Cover Mounting Type	Snap On
Mounting Type	Flush mounted (plaster)
Switching Equipment Mounting Type	Screw
Shape	Rectangular

Surface Finishing	Untreated
Material	Plastic
Model Number	Double
Color	White

Dimensions

Product Net Width	71 mm
Product Net Height	0.047 m
Product Net Depth / Length	142 mm
Product Net Weight	0.0711 kg
Product Net Length	142 mm

Container Information

Package Level 1 Units	box 50 piece
Package Level 1 Width	0.4 m
Package Level 1 Height	0.24 m
Package Level 1 Depth / Length	0.4 m
Package Level 1 Gross Weight	4.035 kg
Package Level 1 EAN	6410011523896
Package Level 3 Units	pallet (lift) 1200 piece
Package Level 3 Width	1.2 m
Package Level 3 Height	1.1 m
Package Level 3 Depth / Length	0.8 m
Package Level 3 Gross Weight	124.56 kg

Ordering

Minimum Order Quantity	50 piece
Customs Tariff Number	39259080
E-Number (Finland)	1152389
E-Number (Sweden)	1422308
Country of Origin	Finland (FI)
Selling Unit of Measure	piece

Certificates and Declarations (Document Number)

Declaration of Conformity - CE	9AKK106713A4627
Instructions and Manuals	9AKK10103A2549
RoHS Information	9AKK106713A4634

Popular Downloads

Data Sheet, Technical Information	9AKK10103A2549
Instructions and Manuals	9AKK10103A2549

Classifications		
ETIM 6	EC002601 - Box/housing for built-in mounting in the wall/ceiling	
ETIM 7	EC002601 - Box/housing for built-in mounting in the wall/ceiling	
ETIM 8	EC002601 - Box/housing for built-in mounting in the wall/ceiling	
WEEE Category	Product Not in WEEE Scope	

Categories

Low Voltage Products and Systems → Installation Materials → Flush Mounted Boxes → Plastic Installation Boxes (for WA Inserts)
→ Hollow Wall

