

## Modular plastic range

### LED blocks for front mounting



MLBL-00W

Color	Rated current mA	Wavelength nm	Type	Order code	Pkg qty	Weight (1pce) kg
<b>Rated voltage 12 V DC</b>						
● Red	12	620	MLBL-00R	1SFA611621R1001	10	0.012
● Green	12	520	MLBL-00G	1SFA611621R1002	10	0.012
● Yellow	12	588	MLBL-00Y	1SFA611621R1003	10	0.012
● Blue	12	468	MLBL-00L	1SFA611621R1004	10	0.012
○ White	12	(1)	MLBL-00W	1SFA611621R1005	10	0.012
<b>Rated voltage 24 V AC/DC</b>						
● Red	10	620	MLBL-01R	1SFA611621R1011	10	0.012
● Green	10	520	MLBL-01G	1SFA611621R1012	10	0.012
● Yellow	10	588	MLBL-01Y	1SFA611621R1013	10	0.012
● Blue	10	468	MLBL-01L	1SFA611621R1014	10	0.012
○ White	10	(1)	MLBL-01W	1SFA611621R1015	10	0.012
<b>Rated voltage 48 V AC/DC</b>						
● Red	10	620	MLBL-02R	1SFA611621R1021	10	0.012
● Green	10	520	MLBL-02G	1SFA611621R1022	10	0.012
● Yellow	10	588	MLBL-02Y	1SFA611621R1023	10	0.012
● Blue	10	468	MLBL-02L	1SFA611621R1024	10	0.012
○ White	10	(1)	MLBL-02W	1SFA611621R1025	10	0.012
<b>Rated voltage 60 V AC/DC</b>						
● Red	13	620	MLBL-03R	1SFA611621R1031	10	0.012
● Green	13	520	MLBL-03G	1SFA611621R1032	10	0.012
● Yellow	13	588	MLBL-03Y	1SFA611621R1033	10	0.012
● Blue	13	468	MLBL-03L	1SFA611621R1034	10	0.012
○ White	13	(1)	MLBL-03W	1SFA611621R1035	10	0.012
<b>Rated voltage 110-130 V AC</b>						
● Red	15	620	MLBL-04R	1SFA611621R1041	10	0.012
● Green	15	520	MLBL-04G	1SFA611621R1042	10	0.012
● Yellow	15	588	MLBL-04Y	1SFA611621R1043	10	0.012
● Blue	15	468	MLBL-04L	1SFA611621R1044	10	0.012
○ White	15	(1)	MLBL-04W	1SFA611621R1045	10	0.012
<b>Rated voltage 110-130 V DC</b>						
● Red	10	620	MLBL-05R	1SFA611621R1051	10	0.012
● Green	10	520	MLBL-05G	1SFA611621R1052	10	0.012
● Yellow	10	588	MLBL-05Y	1SFA611621R1053	10	0.012
● Blue	10	468	MLBL-05L	1SFA611621R1054	10	0.012
○ White	10	(1)	MLBL-05W	1SFA611621R1055	10	0.012
<b>Rated voltage 220 V DC</b>						
● Red	8	620	MLBL-06R	1SFA611621R1061	10	0.012
● Green	8	520	MLBL-06G	1SFA611621R1062	10	0.012
● Yellow	8	588	MLBL-06Y	1SFA611621R1063	10	0.012
● Blue	8	468	MLBL-06L	1SFA611621R1064	10	0.012
○ White	8	(1)	MLBL-06W	1SFA611621R1065	10	0.012

Note: care should be taken for DC supply where + and - must be correctly connected. This is marked X1 (+) and X2 (-) on the product.  
 (1) X=0.31, Y=0.32 according to the ICI Chromaticity diagram.  
 (2) Higher threshold to light up LED to be used in application where there is risk of large induced voltages.

## Modular plastic range

### LED blocks for front mounting



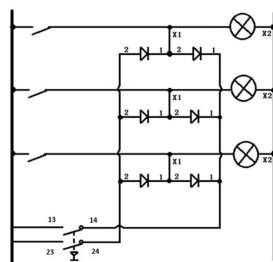
Color	Rated current mA	Wavelength nm	Type	Order code	Pkg qty	Weight (1pce) kg
<b>Rated voltage 230 V AC</b>						
● Red	10	620	MLBL-07R	1SFA611621R1071	10	0.012
● Green	10	520	MLBL-07G	1SFA611621R1072	10	0.012
● Yellow	10	588	MLBL-07Y	1SFA611621R1073	10	0.012
● Blue	10	468	MLBL-07L	1SFA611621R1074	10	0.012
○ White	10	(1)	MLBL-07W	1SFA611621R1075	10	0.012
<b>Rated voltage 380 V AC</b>						
● Red	10	620	MLBL-08R	1SFA611621R1081	10	0.012
● Green	10	520	MLBL-08G	1SFA611621R1082	10	0.012
● Yellow	10	582	MLBL-08Y	1SFA611621R1083	10	0.012
● Blue	10	468	MLBL-08L	1SFA611621R1084	10	0.012
○ White	10	(1)	MLBL-08W	1SFA611621R1085	10	0.012
<b>Rated voltage 415 V AC</b>						
● Red	11	620	MLBL-09R	1SFA611621R1091	10	0.012
● Green	11	520	MLBL-09G	1SFA611621R1092	10	0.012
● Yellow	11	588	MLBL-09Y	1SFA611621R1093	10	0.012
● Blue	11	468	MLBL-09L	1SFA611621R1094	10	0.012
○ White	11	(1)	MLBL-09W	1SFA611621R1095	10	0.012

Note: care should be taken for DC supply where + and - must be correctly connected. This is marked X1 (+) and X2 (-) on the product.  
 (1) X=0.31, Y=0.32 according to the ICI Chromaticity diagram.  
 (2) Higher threshold to light up LED to be used in application where there is risk of large induced voltages.

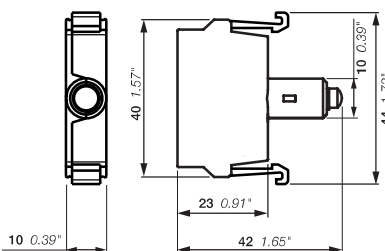
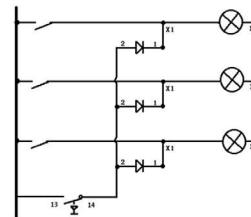


Discription	Type	Order Code	Pkg qty	Weight (1pce) kg
Diode block	MDB-1001	1SFA611630R1001	10	0.015

Lamp test diagram with MLBL-04\* and -07\*



Lamp test diagram with MLBL-00\*, -01\*, -02\*, -03\*, -05\* and -06\*



MLBL  
 Dimensions (mm, inches)