

XSZB130

Inductive proximity sensors XS, accessory for sensor, $\tilde{\Lambda}$ 30 mm, fixing clamp with indexing, plastic



Main

Range of product	Telemecanique Inductive proximity sensors XS
Accessory / separate part category	Mounting and fixing accessories
Accessory / separate part type	Fixing clamp
Accessory / separate part designation	Fixing clamp
Accessory / separate part destination	Cylindrical M30 sensor
Material	Plastic

Complementary

Product compatibility	XS cylindrical M30 XT cylindrical M30
Net weight	0.02 kg

Packing Units

Unit Type of Package 1	PCE
Number of Units in Package 1	1
Package 1 Height	3.5 cm
Package 1 Width	4 cm
Package 1 Length	4 cm
Package 1 Weight	20 g
Unit Type of Package 2	S01
Number of Units in Package 2	50
Package 2 Height	15 cm
Package 2 Width	15 cm
Package 2 Length	40 cm
Package 2 Weight	1.162 kg

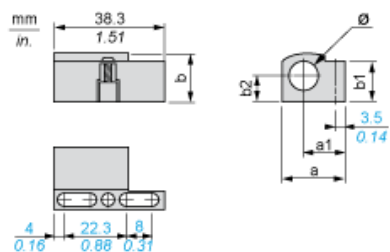
Offer Sustainability

Sustainable offer status	Green Premium product
Environmental Disclosure	Product Environmental Profile
Circularity Profile	End of Life Information
California proposition 65	WARNING: This product can expose you to chemicals including: Diisononyl phthalate (DINP), which is known to the State of California to cause cancer, and Di-isodecyl phthalate (DIDP), which is known to the State of California to cause birth defects or other reproductive harm. For more information go to www.P65Warnings.ca.gov
For all Reach Rohs enquiries contact us at	sustainability@tesensors.com

Contractual warranty

Warranty	18 months
----------	-----------

Dimensions



Dimensions in mm

a	a1	b	b1	b2	∅
39	21.7	35.5	31	18.5	30

Dimensions in in.

a	a1	b	b1	b2	∅
1.53	0.85	1.40	1.22	0.73	1.18