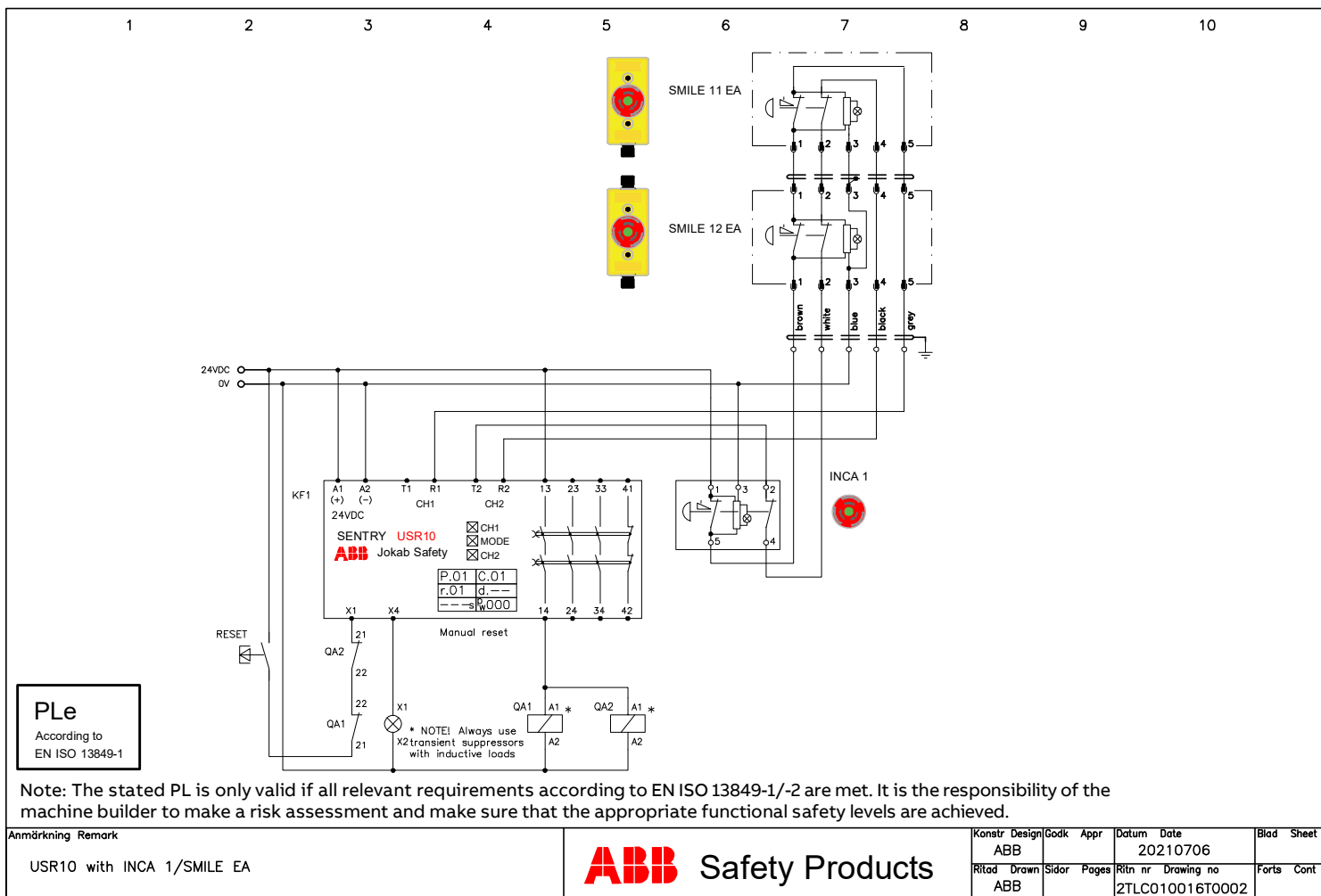
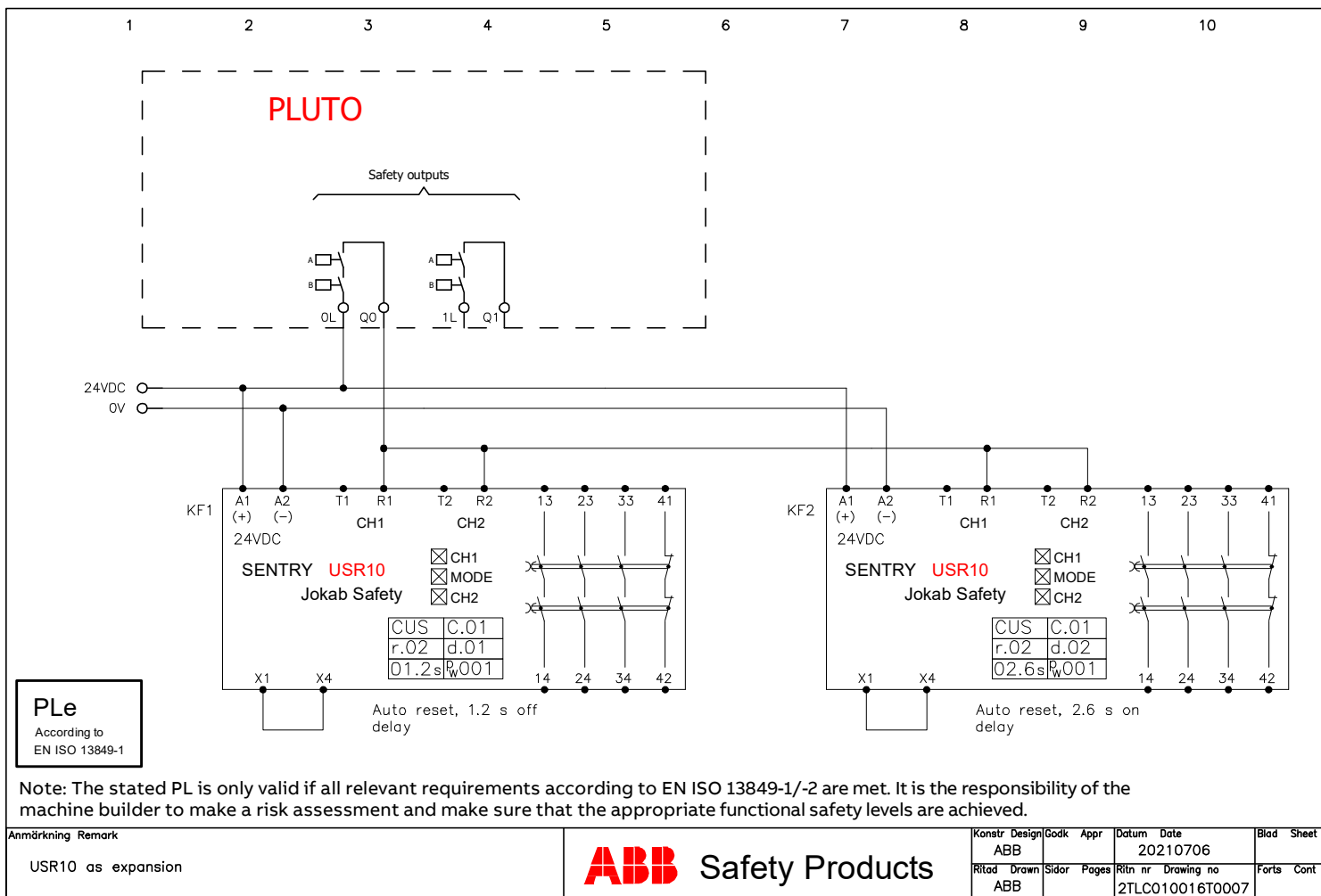
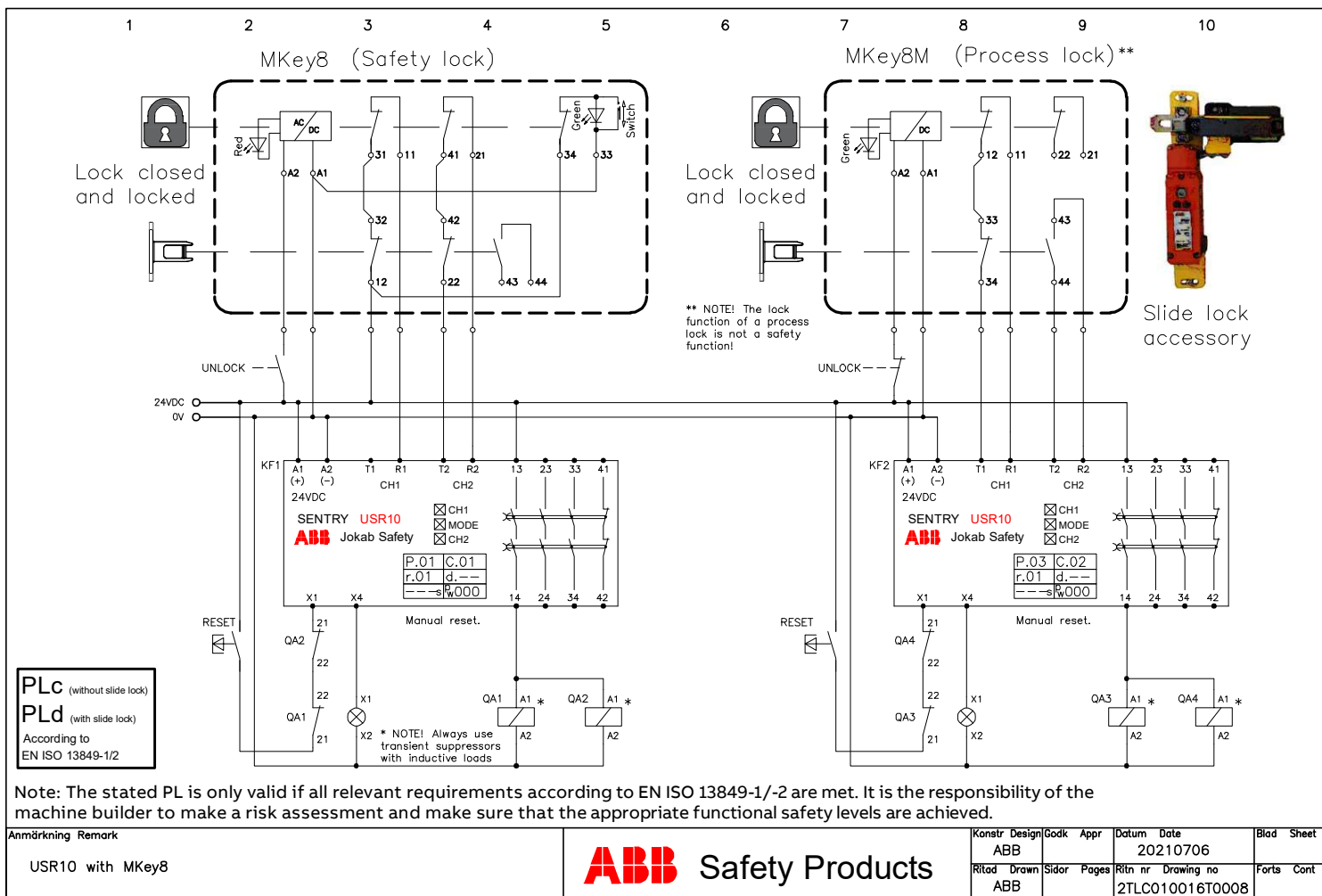


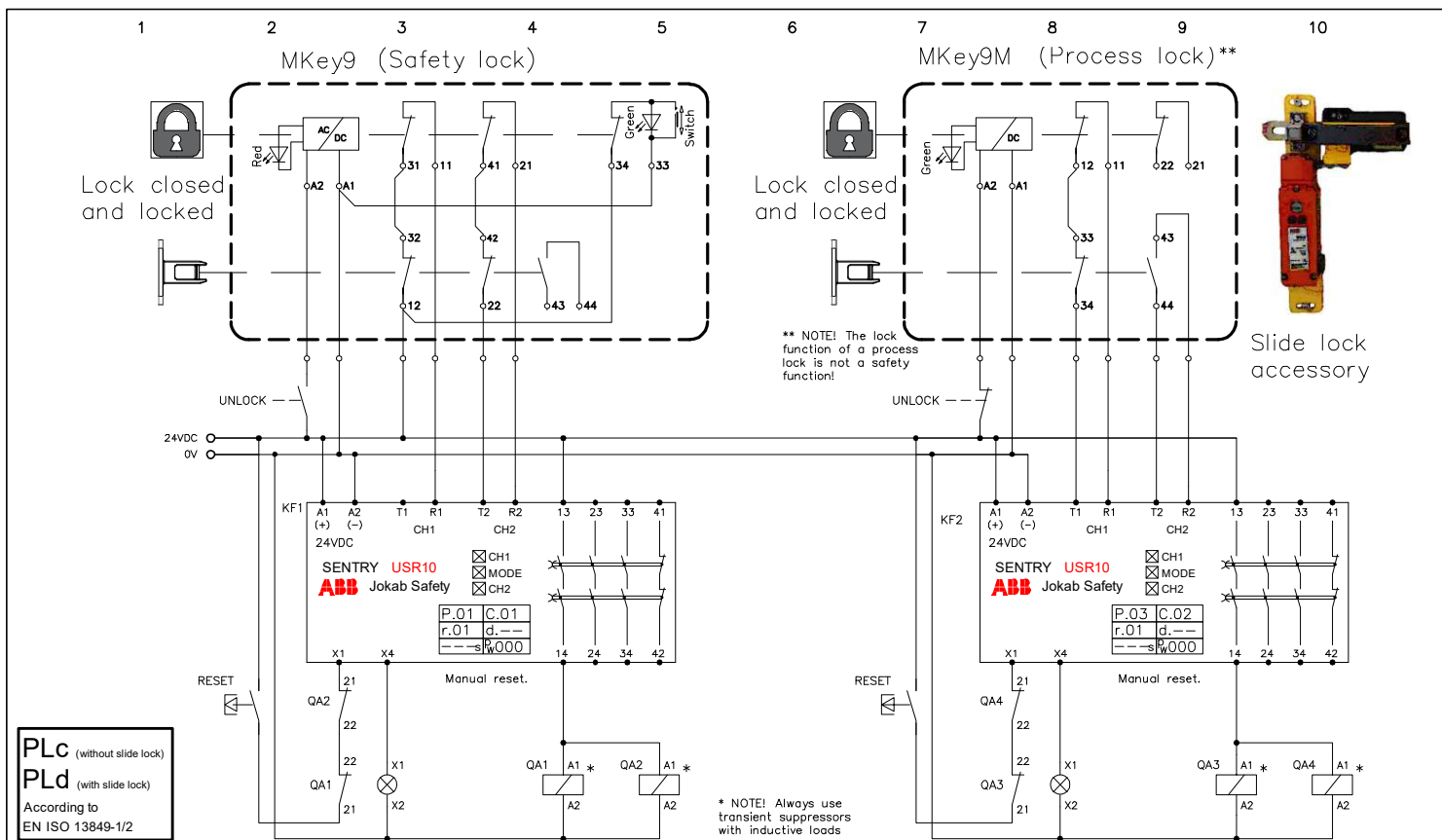
Note: It is the responsibility of the machine builder to make a risk assessment and make sure that the appropriate functional safety levels are achieved.

Anmärkning Remark USR10 general	ABB Safety Products		Konstr Design	Godk Appr	Datum Date	Blad Sheet
			ABB		20210707	
			Ritad Drawn	Sidor Pages	Ritn nr Drawing no	Forts Cont
			ABB		2TLC010016T0001	









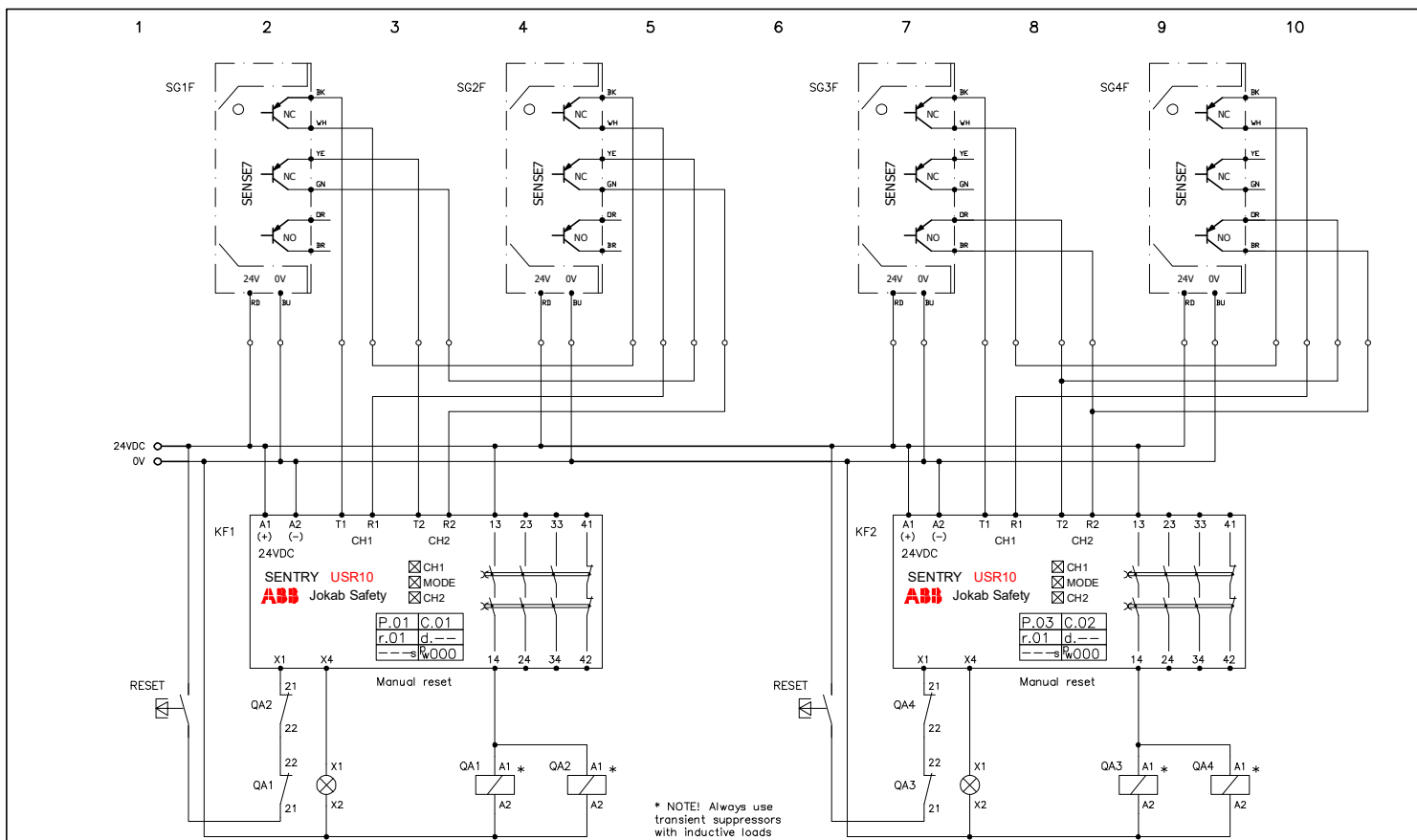
Note: The stated PL is only valid if all relevant requirements according to EN ISO 13849-1/-2 are met. It is the responsibility of the machine builder to make a risk assessment and make sure that the appropriate functional safety levels are achieved.

Anmärkning Remark

USR10 with MKey9

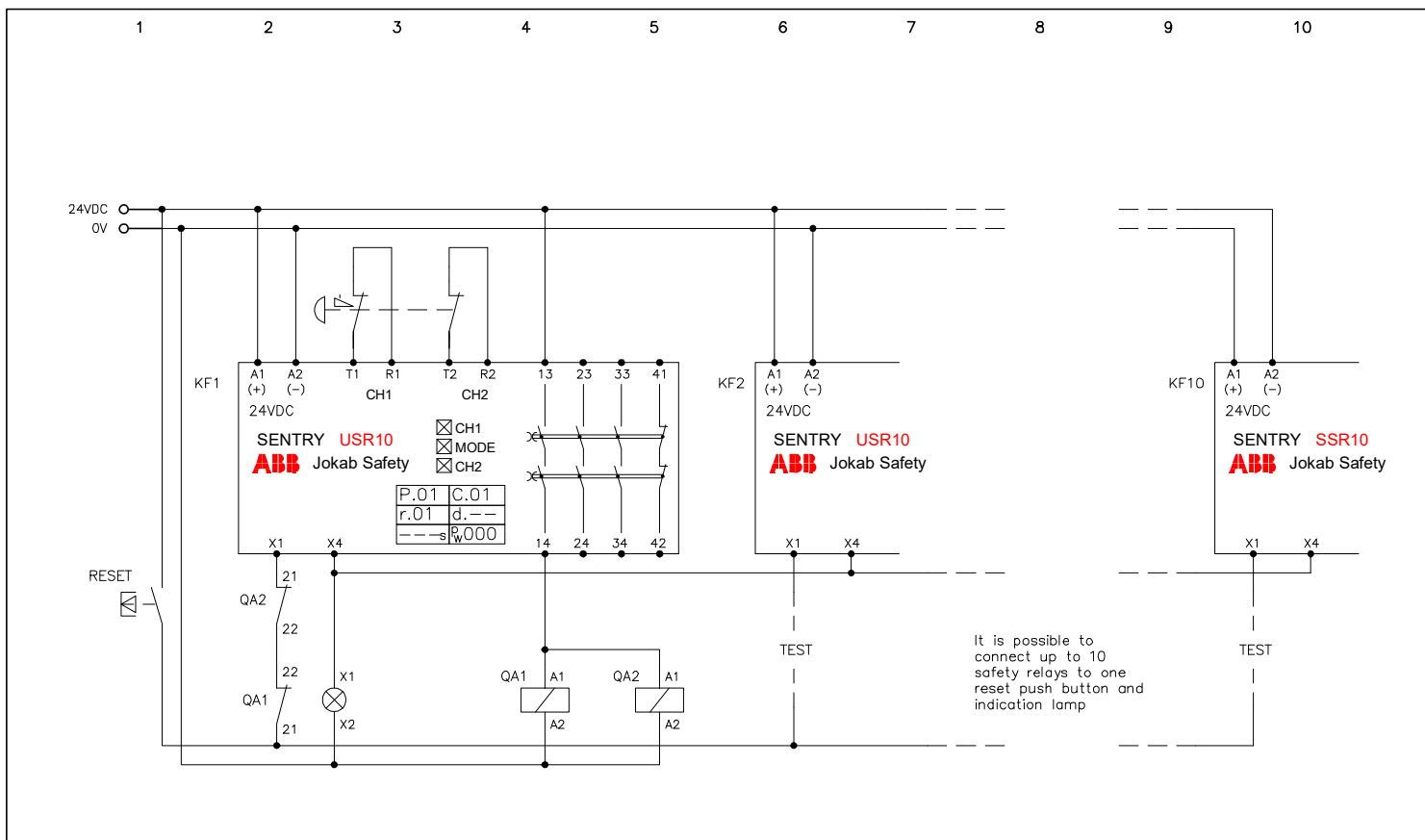


Konstr	Design	Godk	Appr	Datum	Date	Blad	Sheet
ABB				2021	10706		
Ritad	Drawn	Sidor	Pages	Ritn nr	Drawing no	Forts	Cont
ABB				2TLC010016T0009			



Note: The PL should be calculated using ISO/TR 24119 and EN ISO 13849-1/2

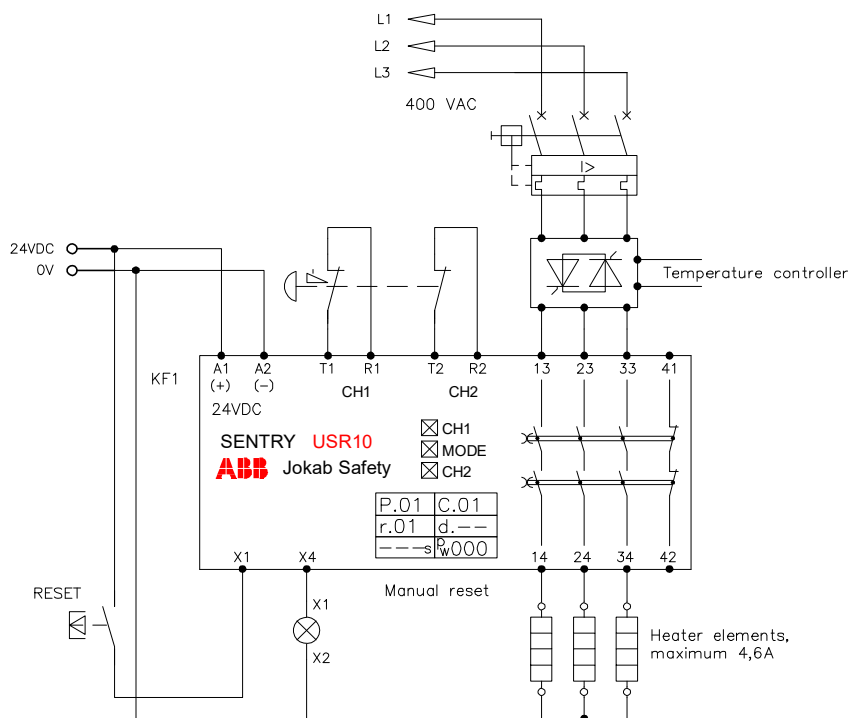
Anmärkning Remark USR10 with Sense7	ABB Safety Products	Konstr Design	Godk Appr	Datum Date	Blad Sheet
		ABB		20210518	
		Ritad Drawn	Sidor Pages	Ritn nr Drawing no	Forts Cont
		ABB		2TLC010016T0010	



Note: It is the responsibility of the machine builder to make a risk assessment and make sure that the appropriate functional safety levels are achieved.

Anmärkning Remark	USR10 Multi reset	ABB Safety Products	Konstr Design	Godk Appr	Datum Date	Blad Sheet
			ABB		20210707	
			Ritad Drawn	Sidor Pages	Ritn nr Drawing no	Forts Cont
			ABB		2TLC010016T0011	

1 2 3 4 5 6 7 8 9 10

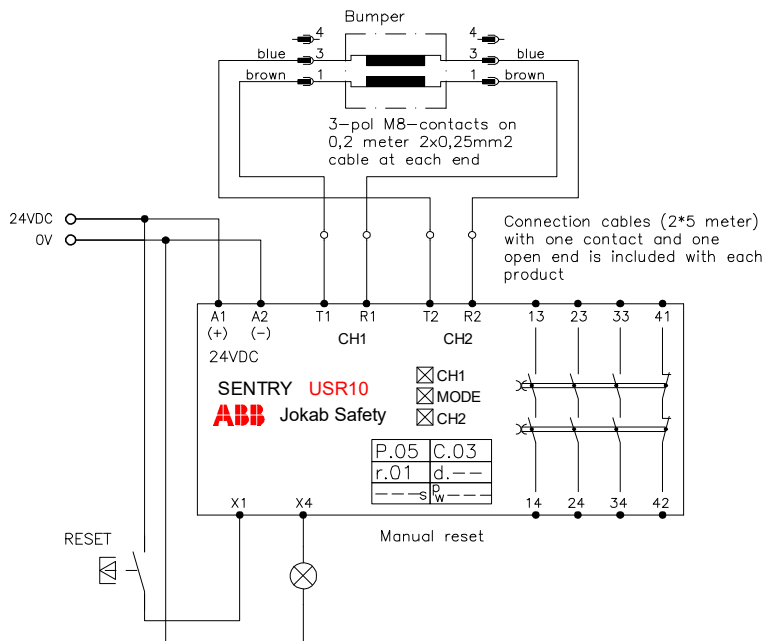


PLe
According to
EN ISO 13849-1

Note: The stated PL is only valid if all relevant requirements according to EN ISO 13849-1/-2 are met. It is the responsibility of the machine builder to make a risk assessment and make sure that the appropriate functional safety levels are achieved.

Anmärkning Remark	USR10 3-phase connection	ABB Safety Products	Konstr Design	Godk Appr	Datum Date	Blad Sheet
			Ritad Drawn	Sidor Pages	Ritn nr Drawing no	Forts Cont
			ABB		20210706	
			ABB		2TLC010016T0018	

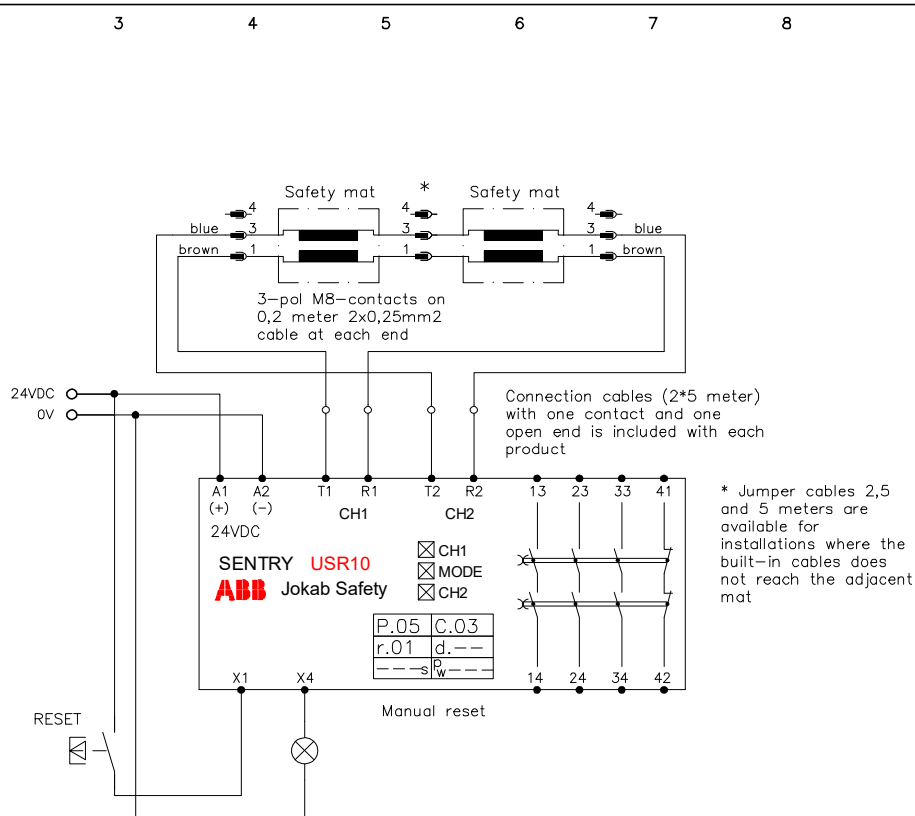
1 2 3 4 5 6 7 8 9 10



PLd
According to
EN ISO 13849-1

Note: The stated PL is only valid if all relevant requirements according to EN ISO 13849-1/-2 are met. It is the responsibility of the machine builder to make a risk assessment and make sure that the appropriate functional safety levels are achieved.

Anmärkning Remark USR10 with bumper	ABB Safety Products		Konstr Design ABB	Godk Appr	Datum Date 20210706	Blad Sheet
	Ritad Drawn ABB	Sidor Pages	Ritn nr Drawing no 2TLC010016R0021	Forts Cont		

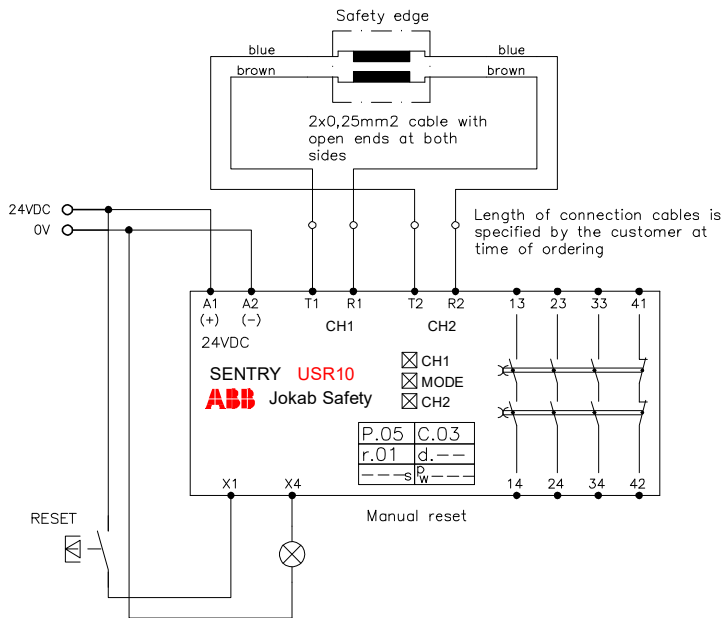


PLd
According to
EN ISO 13849-1

Note: The stated PL is only valid if all relevant requirements according to EN ISO 13849-1/-2 are met. It is the responsibility of the machine builder to make a risk assessment and make sure that the appropriate functional safety levels are achieved.

Anmärkning Remark USR10 with safety mat	ABB Safety Products		Konstr Design	Godk Appr	Datum Date	Blad Sheet
			ABB		20210706	
			Ritad Drawn	Sidor Pages	Ritn nr Drawing no	Forts Cont
			ABB		2TLC010016R0022	

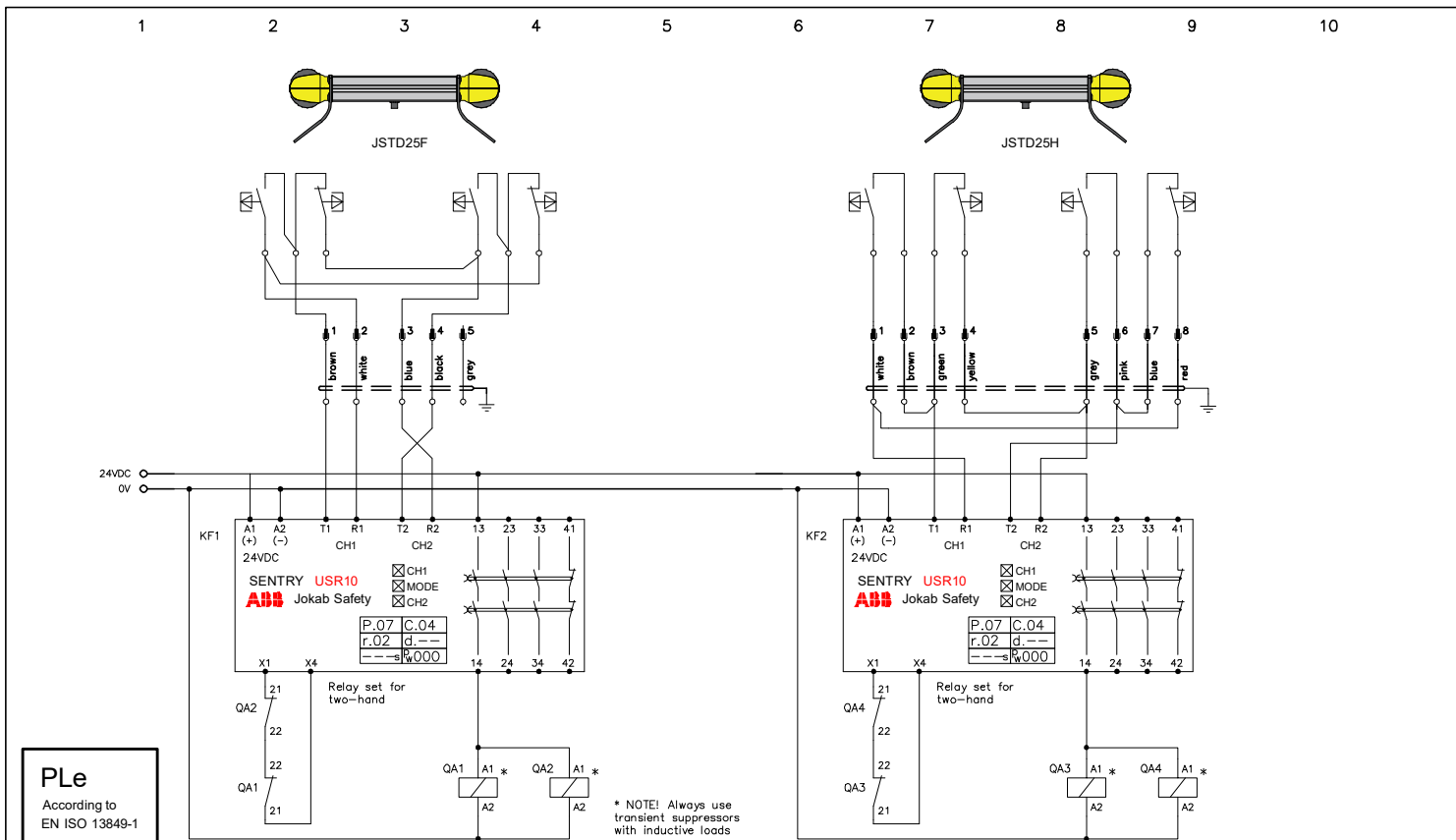
1 2 3 4 5 6 7 8 9 10



PLd
According to
EN ISO 13849-1

Note: The stated PL is only valid if all relevant requirements according to EN ISO 13849-1/-2 are met. It is the responsibility of the machine builder to make a risk assessment and make sure that the appropriate functional safety levels are achieved.

Anmärkning Remark	USR10 with safety edge	ABB Safety Products	Konstr Design	Godk Appr	Datum Date	Blad Sheet
			ABB		20210706	
			Ritad Drawn	Sidor Pages	Ritn nr Drawing no	Forts Cont
			ABB		2TLC010016R0023	



PLe
According to
EN ISO 13849-1

Note: The stated PL is only valid if all relevant requirements according to EN ISO 13849-1/-2 are met. It is the responsibility of the machine builder to make a risk assessment and make sure that the appropriate functional safety levels are achieved.

Anmärkning Remark USR10 with JSTD25F/H	ABB Safety Products				Konstr Design	Godk Appr	Datum Date	Blad Sheet
					ABB		20210706	
					Ritad Drawn	Sidor Pages	Ritn nr Drawing no	Forts Cont
		ABB		2TLC010016T0004				