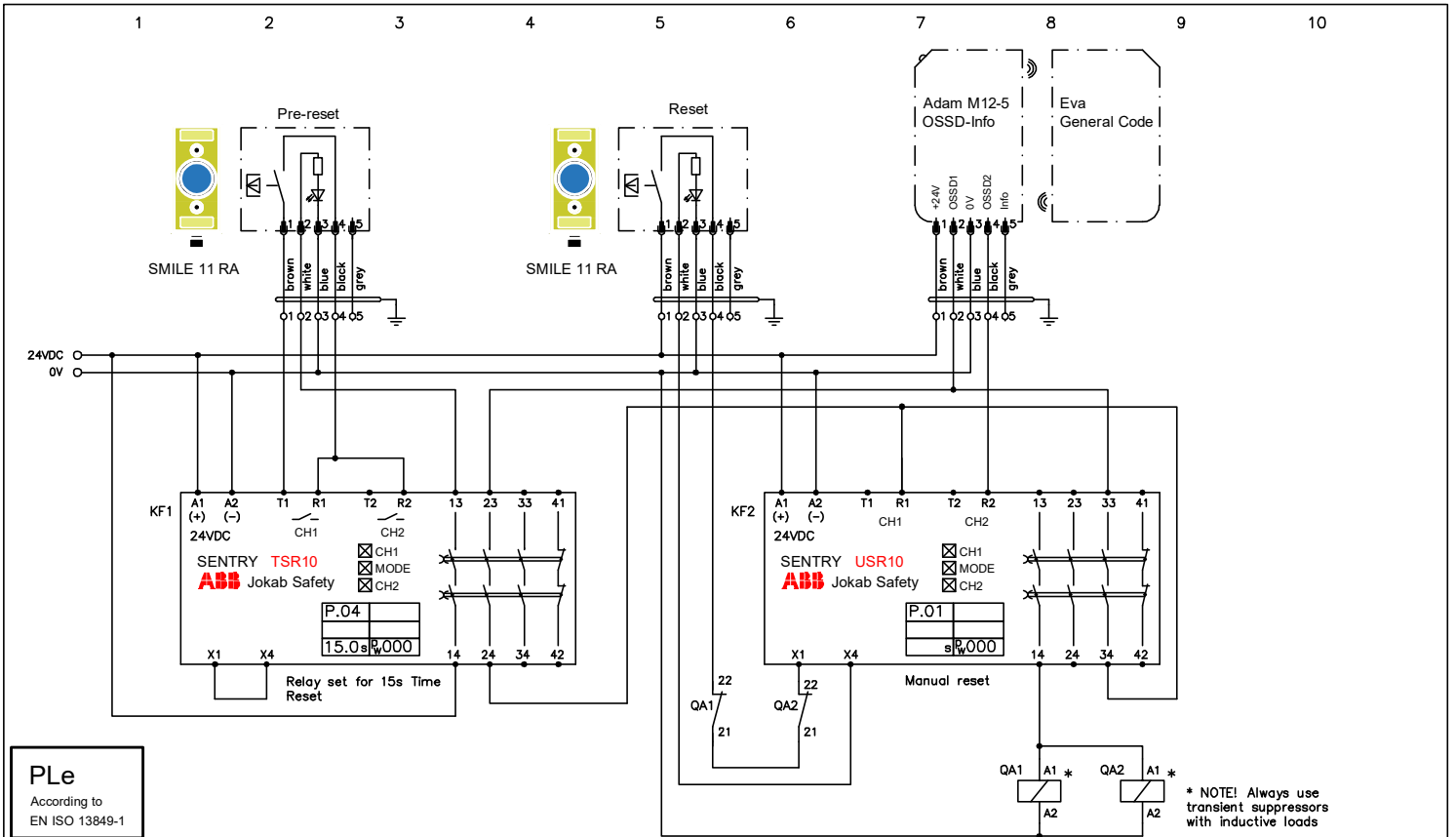


- A) Two signals from T1/T2
- B) One signal from T1
- C) Two OSSD signals
- D) Two signals from +24VDC
- E) One signal from +24VDC

* NOTE! Always use transient suppressors with inductive loads

Note: It is the responsibility of the machine builder to make a risk assessment and make sure that the appropriate functional safety levels are achieved.

Anmärkning Remark	TSR10 general	ABB Safety Products	Konstr Design	Godk Appr	Datum Date	Blad Sheet
			ABB		20210707	
			Ritad Drawn	Sidor Pages	Ritn nr Drawing no	Forts Cont
			ABB		2TLC010013T0001	

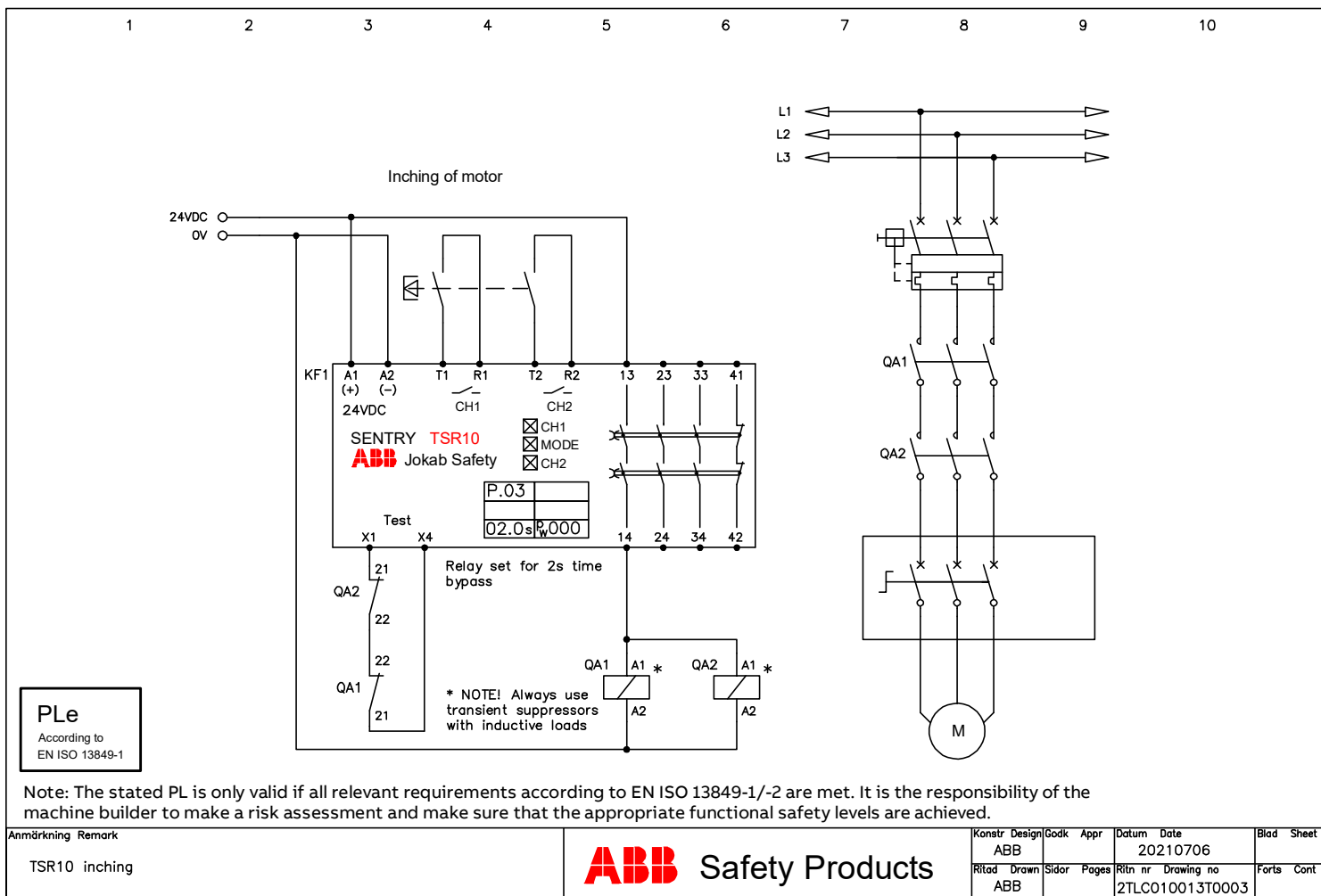


PL_e
According to
EN ISO 13849-1

Note: The stated PL is only valid if all relevant requirements according to EN ISO 13849-1/-2 are met. It is the responsibility of the machine builder to make a risk assessment and make sure that the appropriate functional safety levels are achieved.

Anmärkning Remark	Konstr Design	Godk Appr	Datum Date	Blad Sheet
TSR10 pre-reset	ABB		20210706	
	Ritad Drawn	Sidor Pages	Ritn nr Drawing no	Forts Cont
	ABB		2TLC010013T0002	





PLe
According to
EN ISO 13849-1

Note: The stated PL is only valid if all relevant requirements according to EN ISO 13849-1/-2 are met. It is the responsibility of the machine builder to make a risk assessment and make sure that the appropriate functional safety levels are achieved.

ABB Safety Products