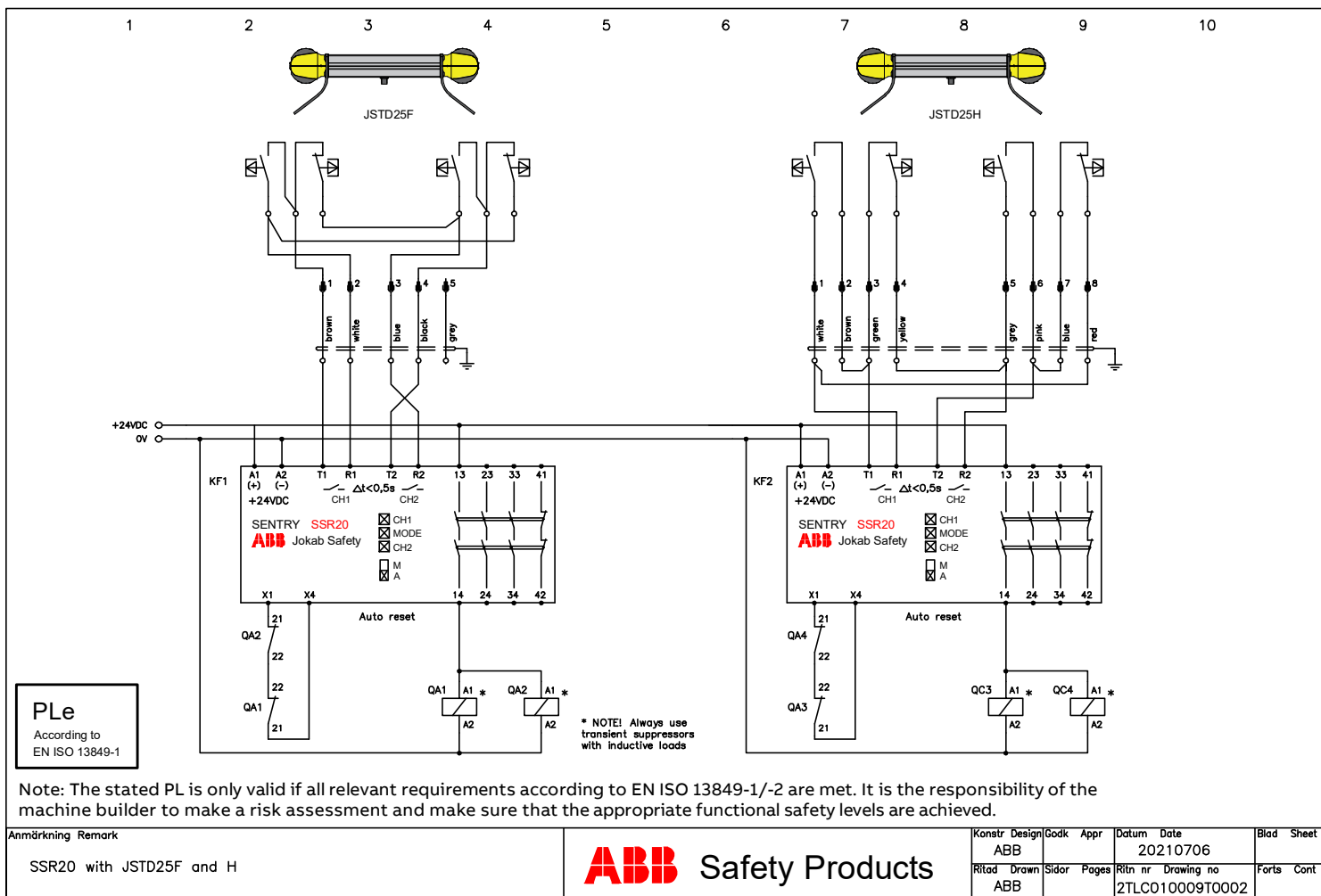
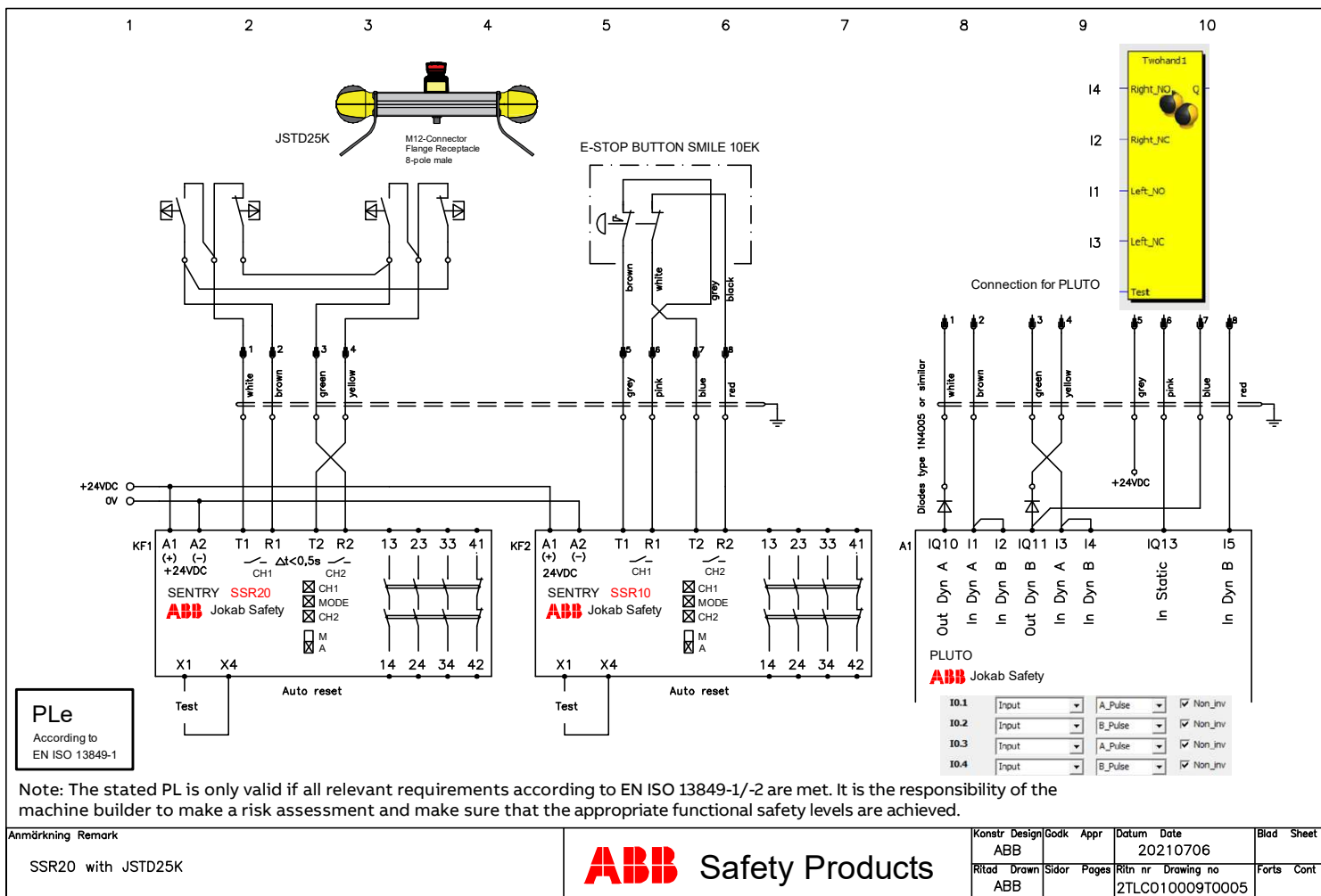


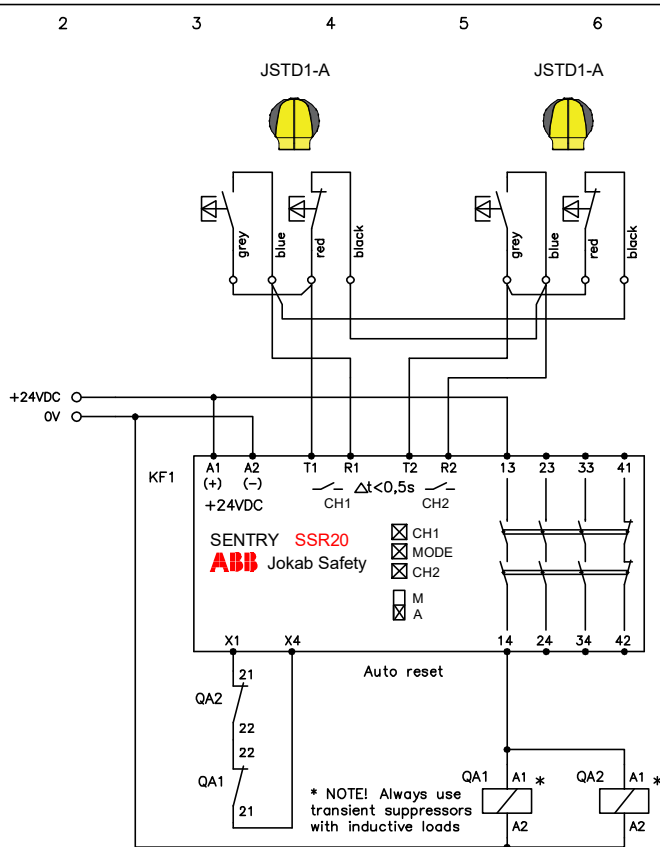
**PLe**  
According to  
EN ISO 13849-1

Note: The stated PL is only valid if all relevant requirements according to EN ISO 13849-1/-2 are met. It is the responsibility of the machine builder to make a risk assessment and make sure that the appropriate functional safety levels are achieved.

Anmärkning Remark	SSR20 general	<b>ABB</b> Safety Products	Konstr Design	Godk Appr	Datum Date	Blad Sheet
			ABB		20210706	
			Ritad Drawn	Sidor Pages	Ritn nr Drawing no	Forts Cont
			ABB		2TLC010009T0001	



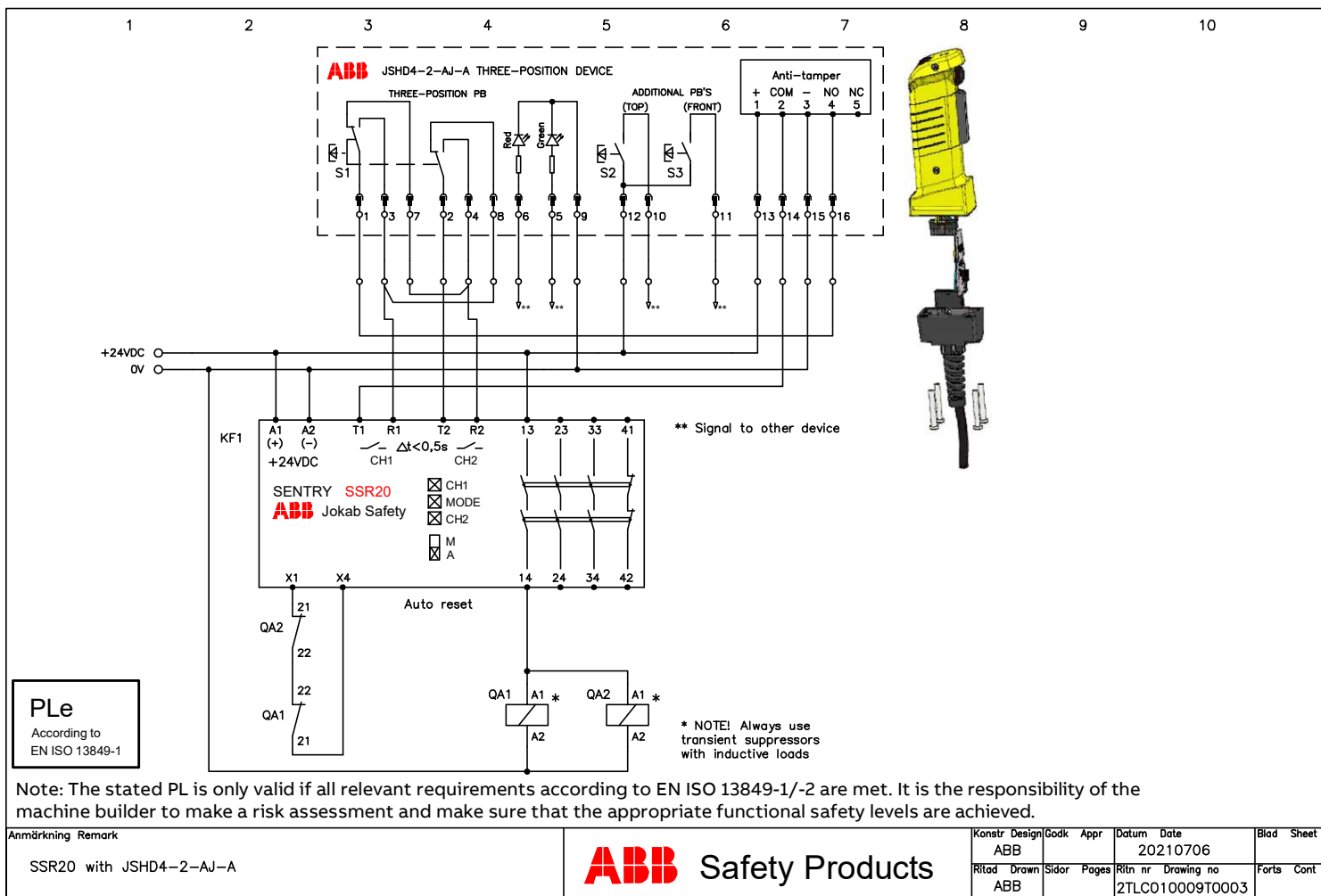




**PL<sub>e</sub>**  
According to  
EN ISO 13849-1

Note: The stated PL is only valid if all relevant requirements according to EN ISO 13849-1/-2 are met. It is the responsibility of the machine builder to make a risk assessment and make sure that the appropriate functional safety levels are achieved.

Anmärkning Remark	SSR20 with JSTD1-A	<b>ABB</b> Safety Products	Konstr	Design	Godk	Appr	Datum	Date	Blad	Sheet
			ABB				20210706			
			Ritad	Drawn	Sidor	Pages	Ritn nr	Drawing no	Forts	Cont
			ABB				2TLC010009T0004			



**PLe**  
According to  
EN ISO 13849-1

Note: The stated PL is only valid if all relevant requirements according to EN ISO 13849-1/-2 are met. It is the responsibility of the machine builder to make a risk assessment and make sure that the appropriate functional safety levels are achieved.

Anmärkning Remark SSR20 with JSHD4-2-AJ-A	<b>ABB Safety Products</b>				Konstr Design	Godk Appr	Datum Date	Blad Sheet
					ABB		20210706	
		Ritad Drawn	Sidor Pages	Ritn nr Drawing no	Forts Cont			
		ABB		2TLC010009T0003				