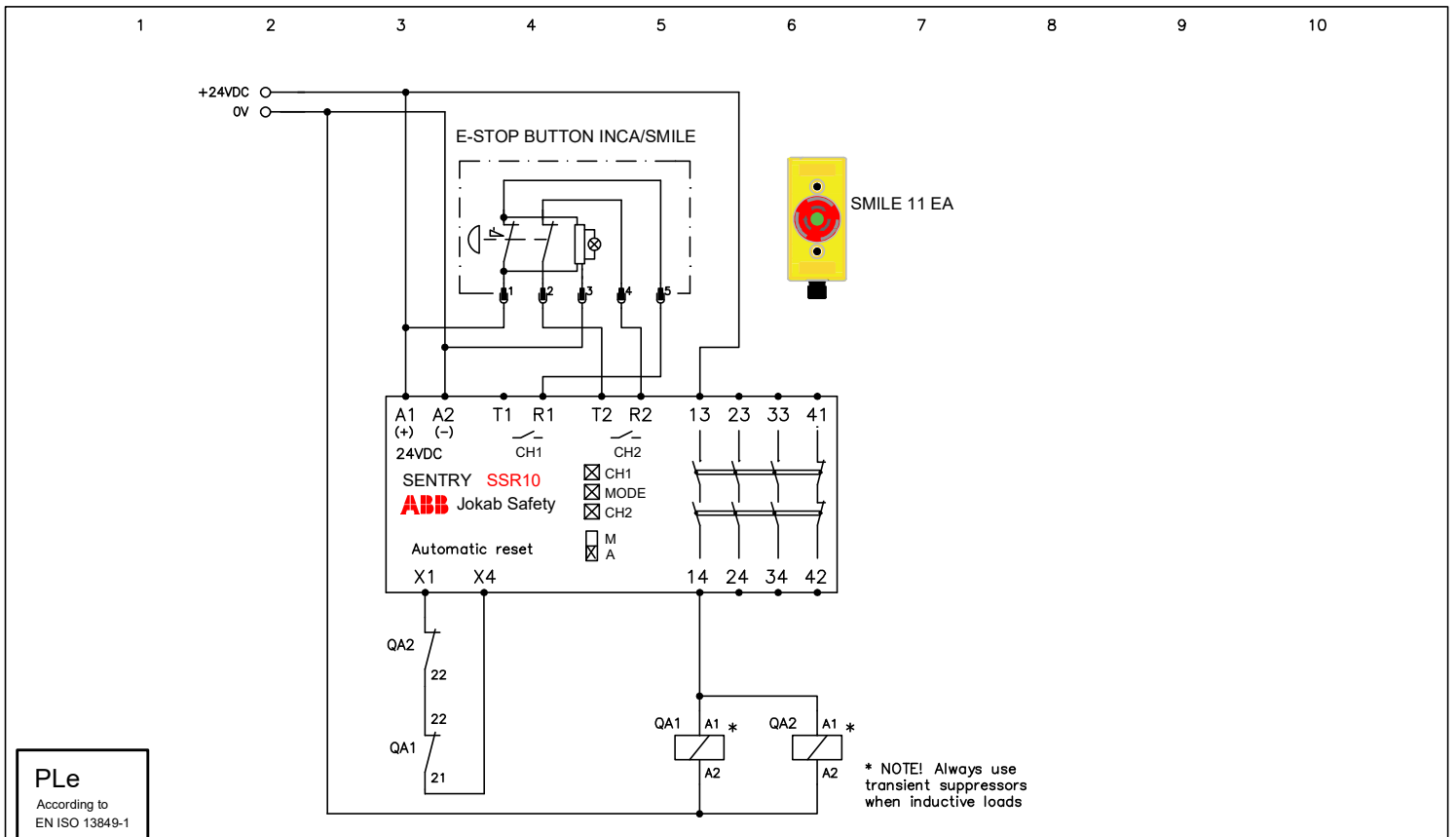


Note: It is the responsibility of the machine builder to make a risk assessment and make sure that the appropriate functional safety levels are achieved.

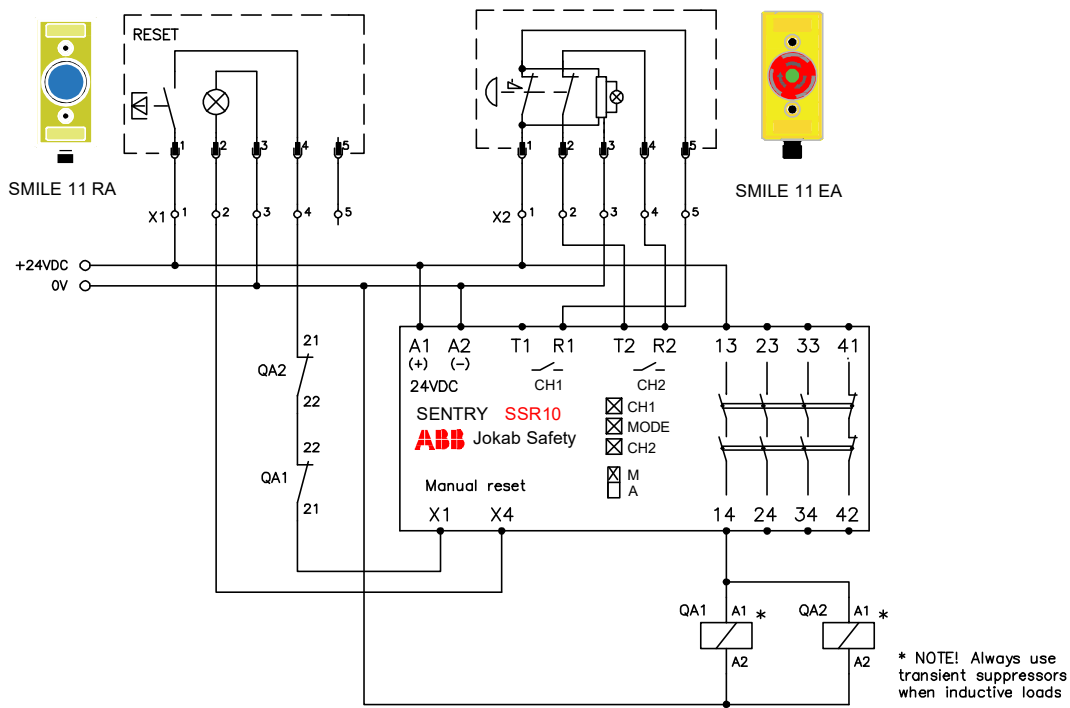
Anmärkning Remark SSR10 general	ABB Safety Products	Konstr Design	Godk Appr	Datum Date	Blad Sheet
		ABB		20210707	
		Ritad Drawn	Sidor Pages	Ritn nr Drawing no	Forts Cont
		ABB		2TLC010007T0001	



PL_e
According to
EN ISO 13849-1

Note: The stated PL is only valid if all relevant requirements according to EN ISO 13849-1/-2 are met. It is the responsibility of the machine builder to make a risk assessment and make sure that the appropriate functional safety levels are achieved.

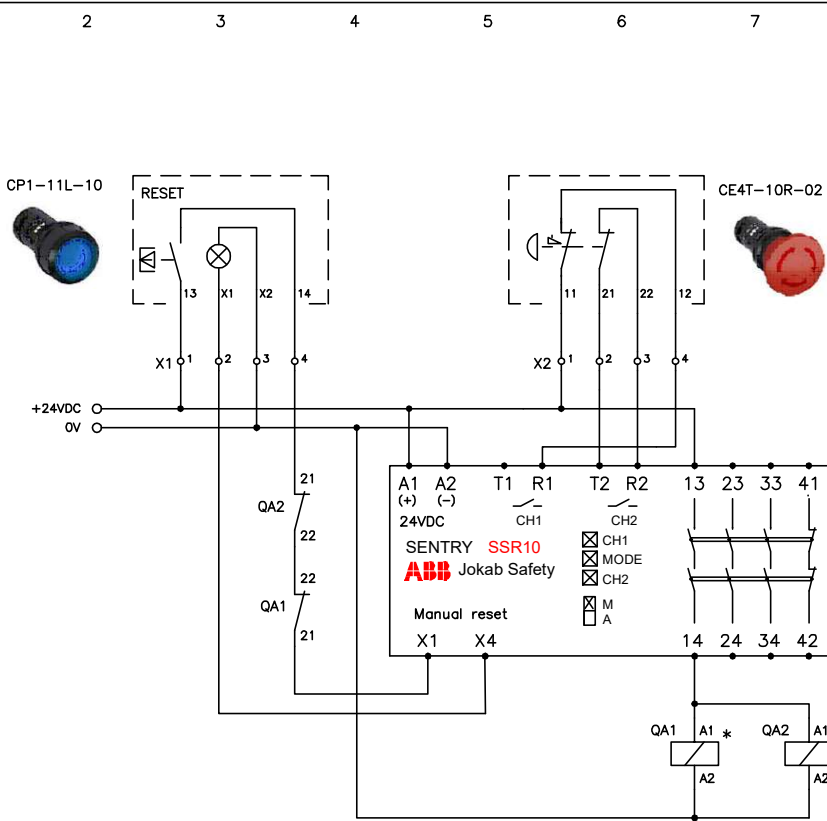
Anmärkning Remark SSR10 with SMILE	ABB Safety Products	Konstr Design	Godk Appr	Datum Date	Blad Sheet
		ABB		20210706	
		Ritad Drawn	Sidor Pages	Ritn nr Drawing no	Forts Cont
		ABB		2TLC010007T0003	



PL_e
According to
EN ISO 13849-1

Note: The stated PL is only valid if all relevant requirements according to EN ISO 13849-1/-2 are met. It is the responsibility of the machine builder to make a risk assessment and make sure that the appropriate functional safety levels are achieved.

Anmärkning Remark SSR10 with SMILE and RESET	ABB Safety Products		Konstr Design	Godk Appr	Datum Date	Blad Sheet
			ABB		20210706	
			Ritad Drawn	Sidor Pages	Ritn nr Drawing no	Forts Cont
			ABB		2TLC010007T0014	



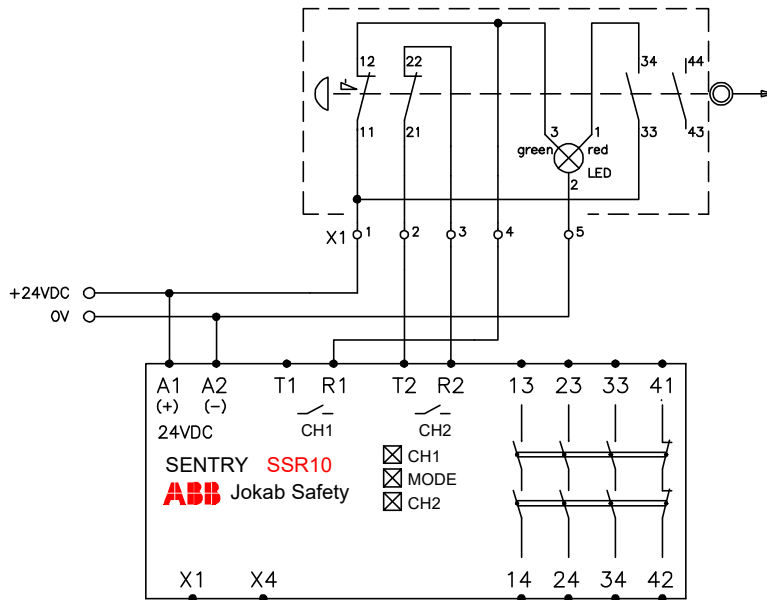
PLe
According to
EN ISO 13849-1

* NOTE! Always use transient suppressors when inductive loads

Note: The stated PL is only valid if all relevant requirements according to EN ISO 13849-1/-2 are met. It is the responsibility of the machine builder to make a risk assessment and make sure that the appropriate functional safety levels are achieved.

Anmärkning Remark	SSR10 with compact pilot devices	ABB Safety Products	Konstr Design	Godk Appr	Datum Date	Blad Sheet
			ABB		20210706	
			Ritad Drawn	Sidor Pages	Ritn nr Drawing no	Forts Cont
			ABB		2TLC010007T0016	

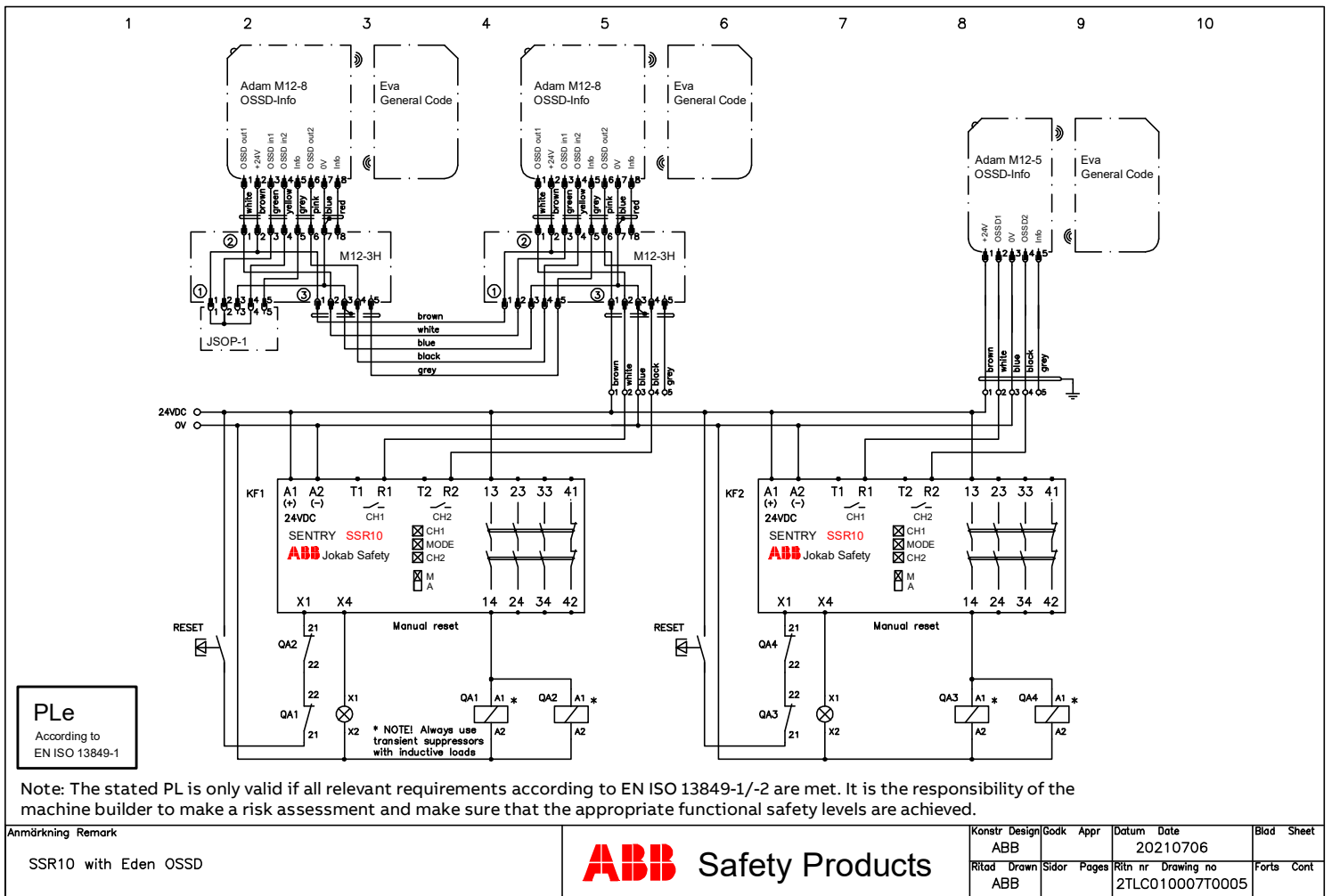
1 2 3 4 5 6 7 8 9 10



PLe
According to
EN ISO 13849-1

Note: The stated PL is only valid if all relevant requirements according to EN ISO 13849-1/-2 are met. It is the responsibility of the machine builder to make a risk assessment and make sure that the appropriate functional safety levels are achieved.

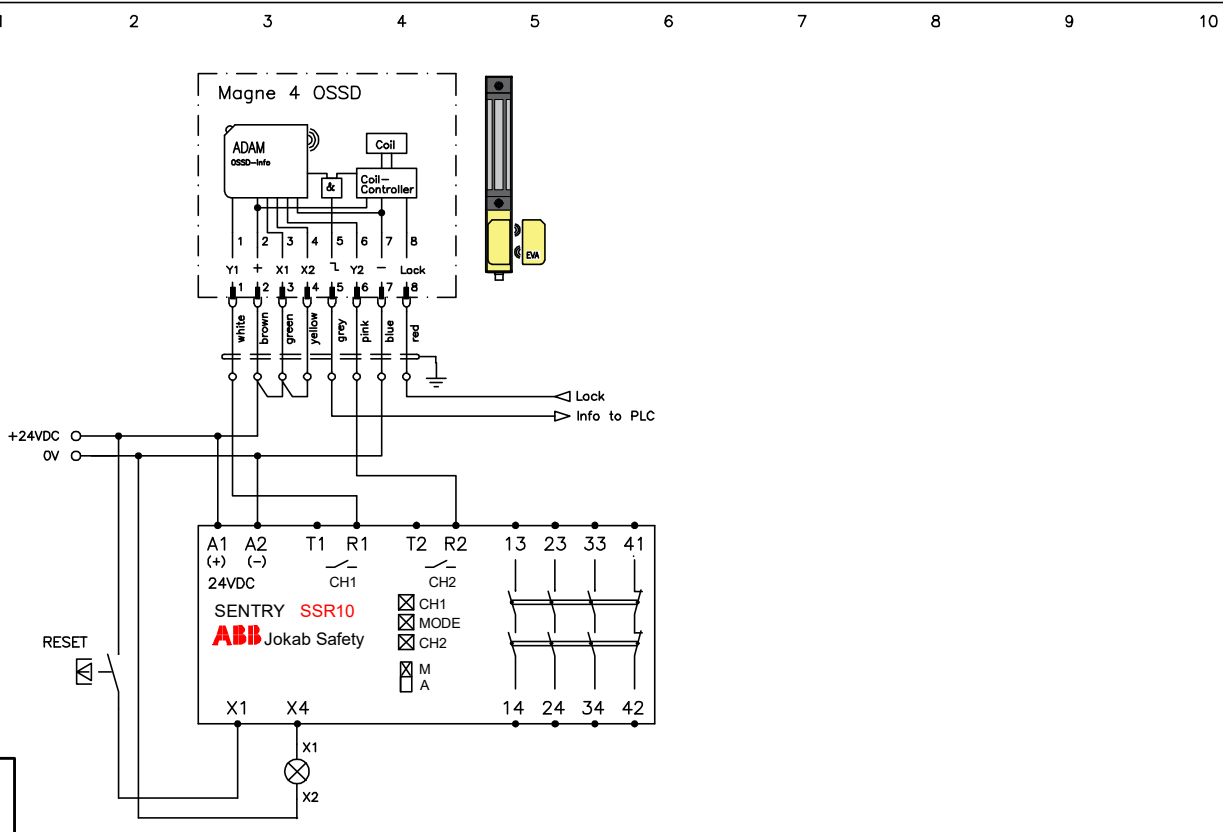
Anmärkning Remark SSR10 with LineStrong	ABB Safety Products				Konstr Design	Godk Appr	Datum Date	Blad Sheet
					ABB		20210706	
		Ritad Drawn	Sidor Pages	Ritn nr Drawing no	Forts Cont			
		ABB		2TLC010007T0018				



PLe
According to
EN ISO 13849-1

Note: The stated PL is only valid if all relevant requirements according to EN ISO 13849-1/-2 are met. It is the responsibility of the machine builder to make a risk assessment and make sure that the appropriate functional safety levels are achieved.

Anmärkning Remark SSR10 with Eden OSSD	ABB Safety Products		Konstr Design	Godk Appr	Datum Date	Blad Sheet
			ABB		20210706	
			Ritad Drawn	Sidor Pages	Ritn nr Drawing no	Forts Cont
			ABB		2TLC010007T0005	

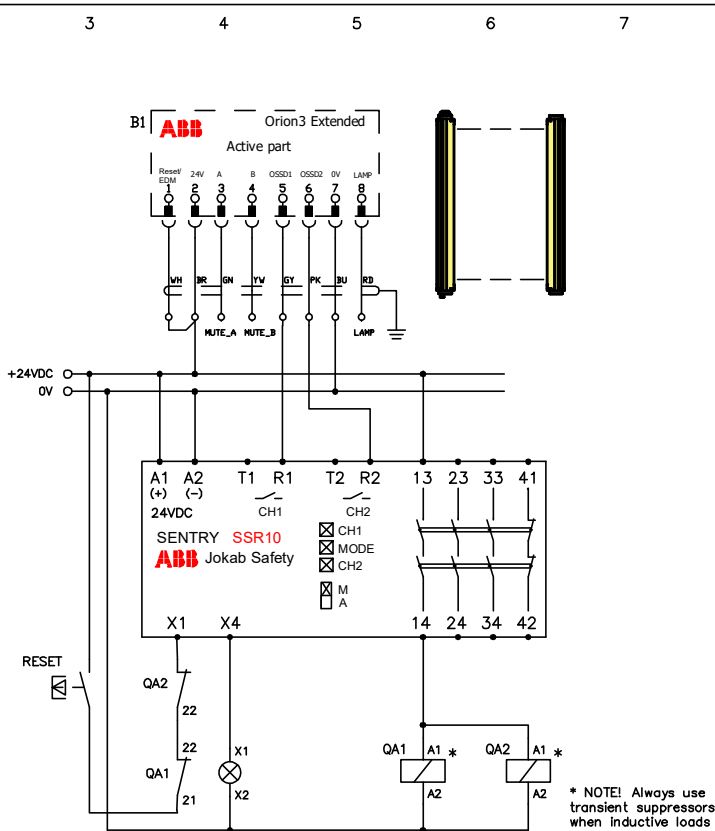


PLe
According to
EN ISO 13849-1

Note: The stated PL is only valid if all relevant requirements according to EN ISO 13849-1/-2 are met. It is the responsibility of the machine builder to make a risk assessment and make sure that the appropriate functional safety levels are achieved.

Anmärkning Remark SSR10 with Magne 4 OSSD	Konstr Design ABB		Godk Appr	Datum Date 20210706	Blad Sheet
	Ritad Drawn ABB	Sidor Pages	Ritn nr Drawing no 2TLC010007T0013	Forts Cont	

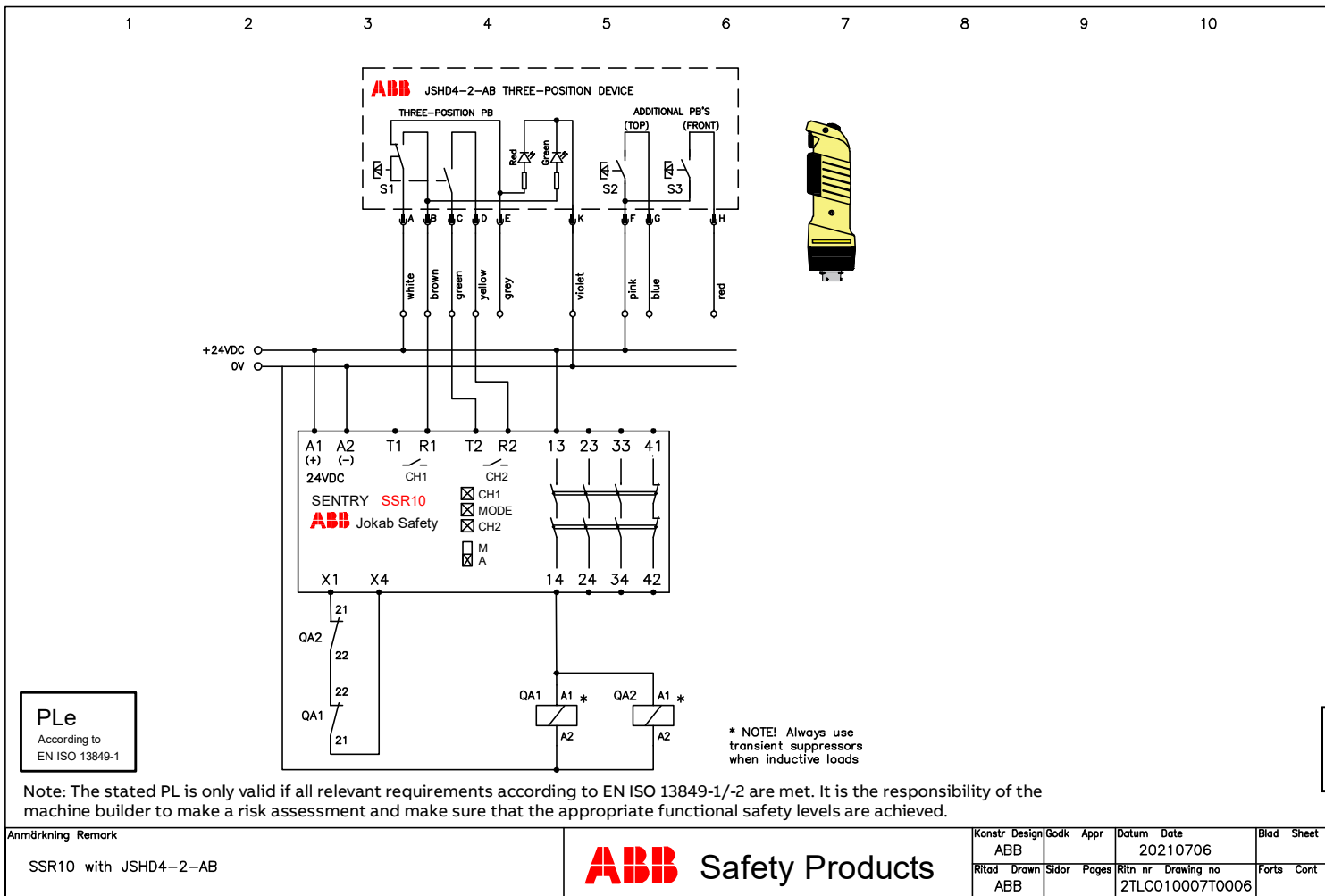




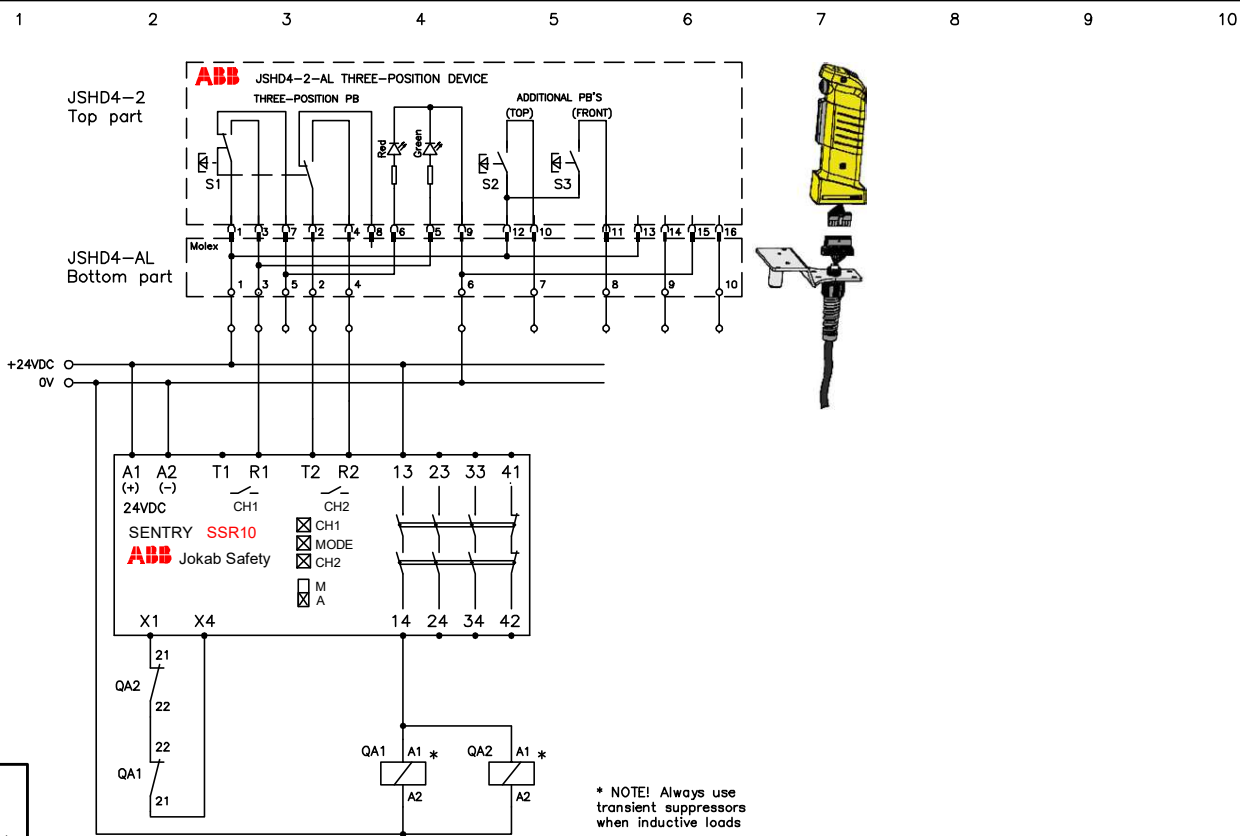
PLe
According to
EN ISO 13849-1

Note: The stated PL is only valid if all relevant requirements according to EN ISO 13849-1/-2 are met. It is the responsibility of the machine builder to make a risk assessment and make sure that the appropriate functional safety levels are achieved.

Anmärkning Remark SSR10 with ORION3 Extended	ABB Safety Products		Konstr Design	Godk Appr	Datum Date	Blad Sheet
			ABB		20210706	
			Ritad Drawn	Sidor Pages	Ritn nr Drawing no	Forts Cont
			ABB		2TLC010007T0004	



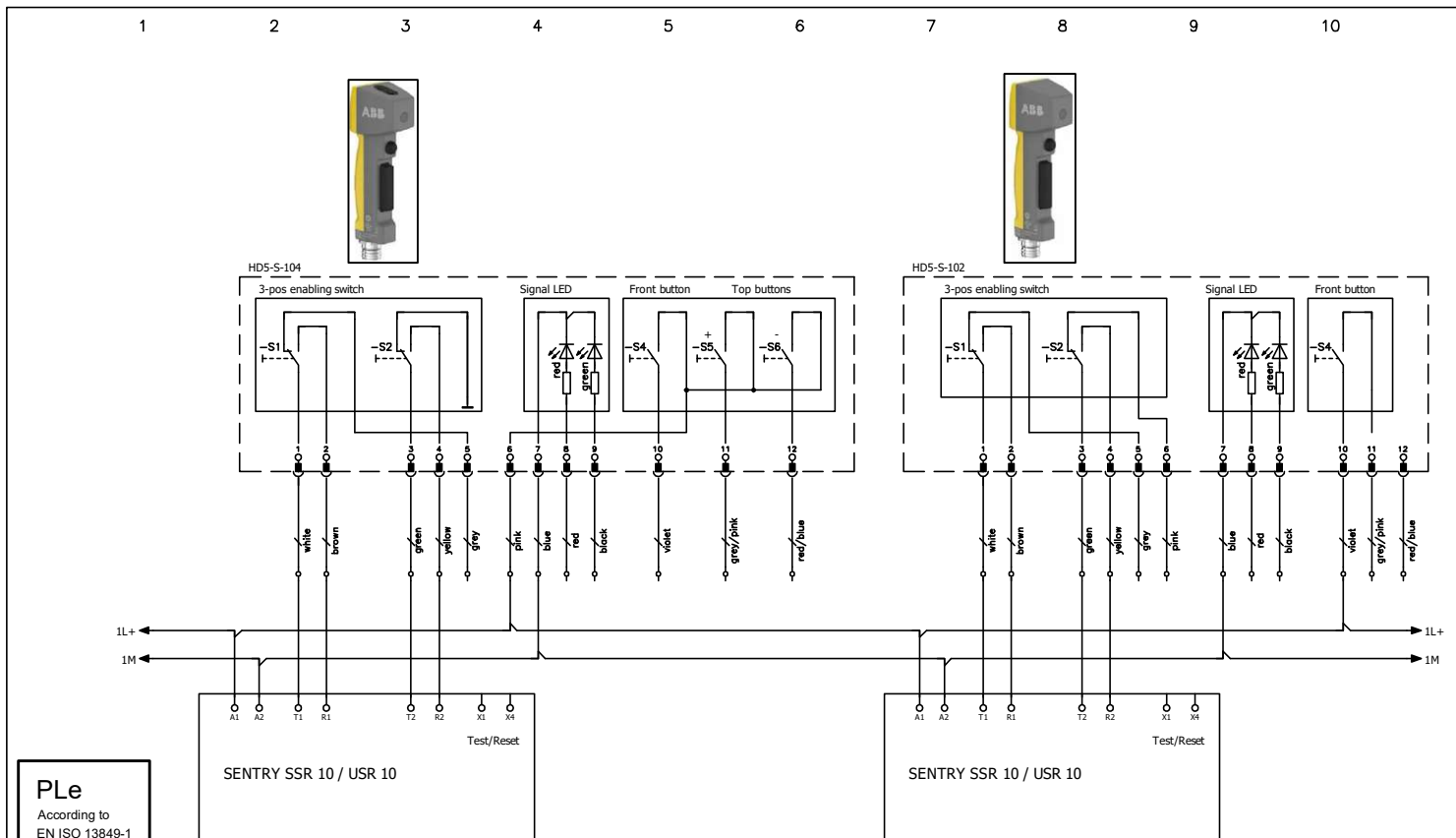
Note: The stated PL is only valid if all relevant requirements according to EN ISO 13849-1/-2 are met. It is the responsibility of the machine builder to make a risk assessment and make sure that the appropriate functional safety levels are achieved.



PLe
According to
EN ISO 13849-1

Note: The stated PL is only valid if all relevant requirements according to EN ISO 13849-1/-2 are met. It is the responsibility of the machine builder to make a risk assessment and make sure that the appropriate functional safety levels are achieved.

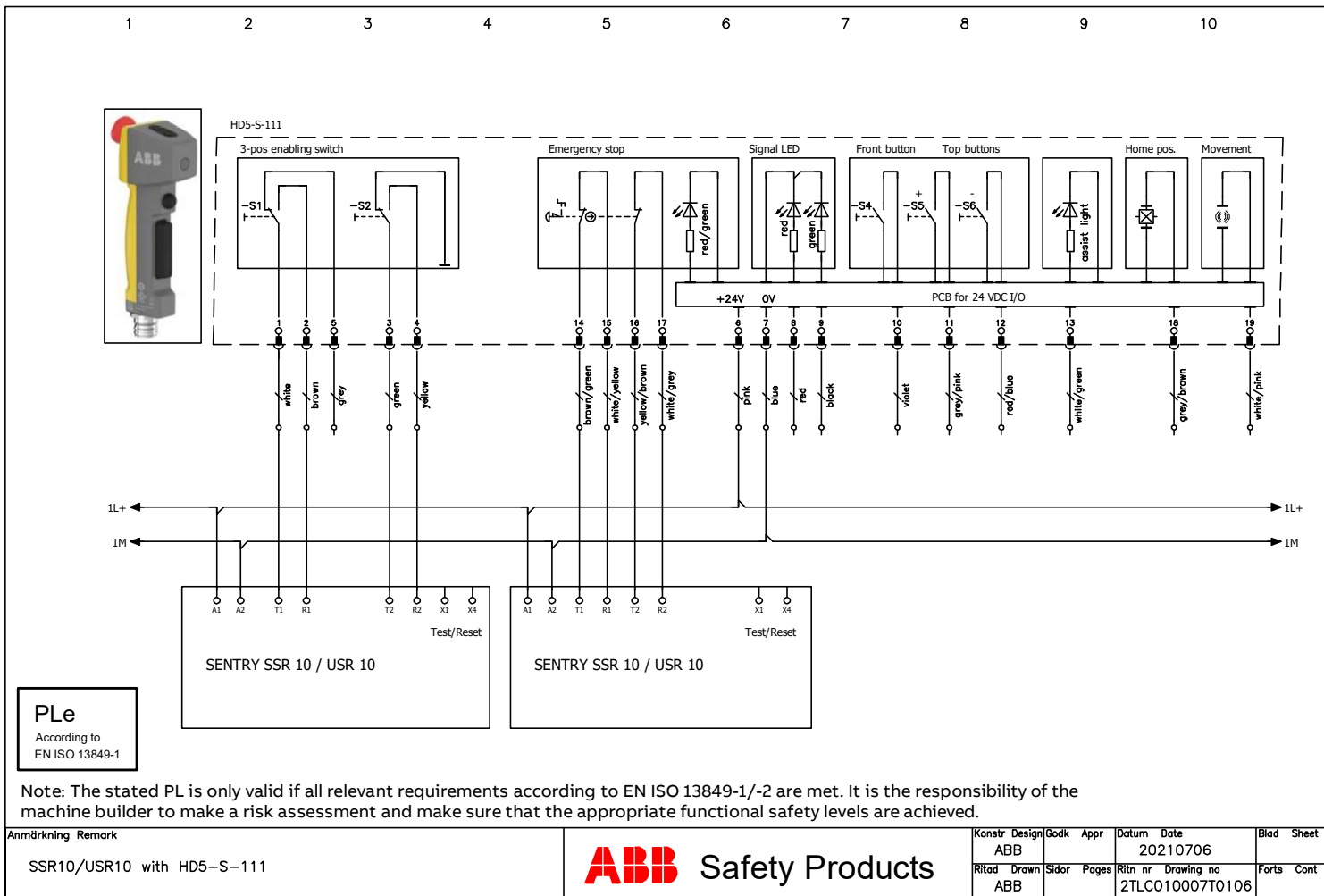
Anmärkning Remark	SSR10 with JSHD4-2-AL	ABB Safety Products	Konstr Design	Godk Appr	Datum Date	Blad Sheet
			ABB		20210706	
			Ritad Drawn	Sidor Pages	Ritn nr Drawing no	Forts Cont
			ABB		2TLC010007T0009	



PLe
According to
EN ISO 13849-1

Note: The stated PL is only valid if all relevant requirements according to EN ISO 13849-1/-2 are met. It is the responsibility of the machine builder to make a risk assessment and make sure that the appropriate functional safety levels are achieved.

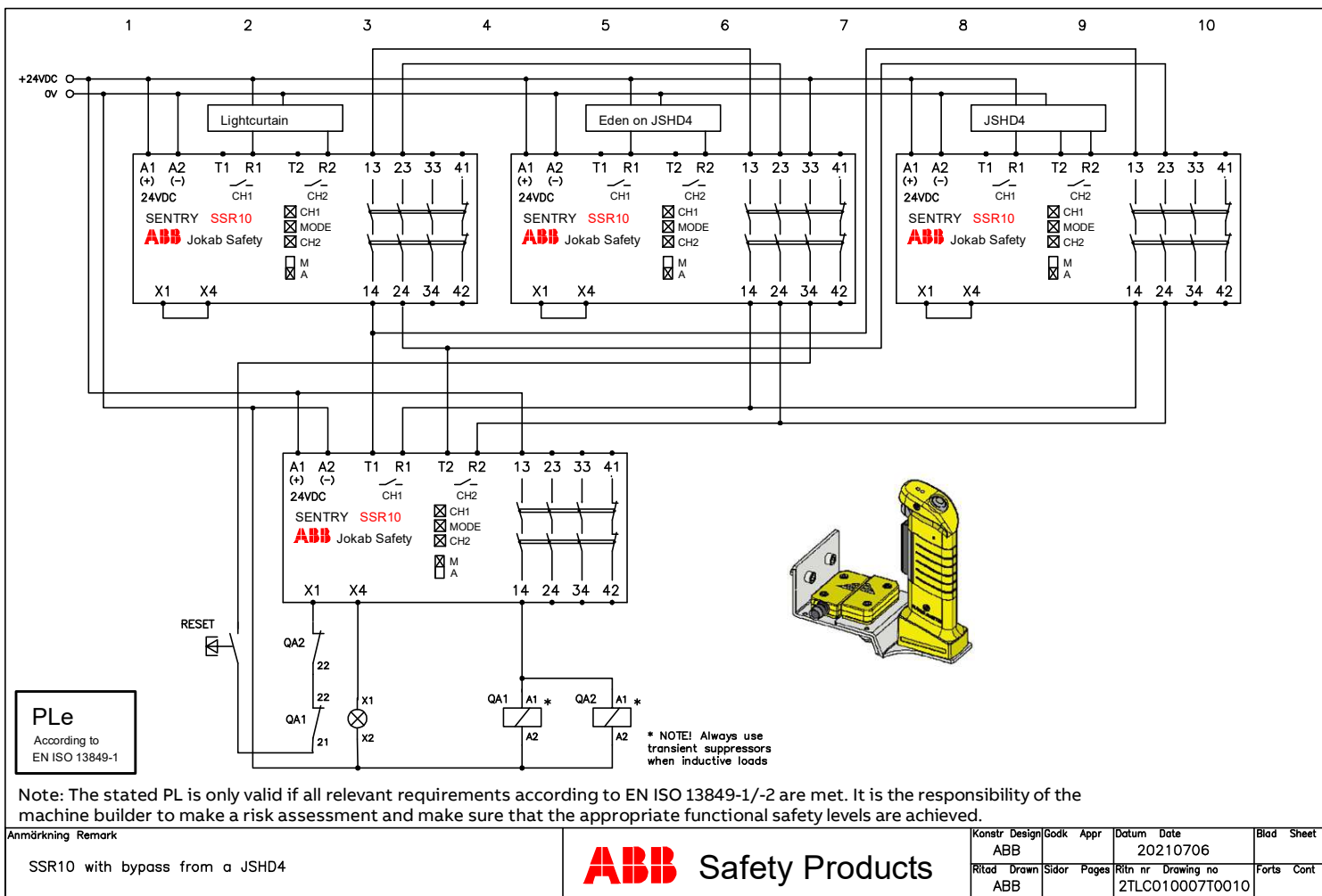
Anmärkning Remark	SSR10/USR10 with HD5-S-104 and -102		Konstr Design	Godk Appr	Datum Date	Blad Sheet
			ABB		20210706	
			Ritad Drawn	Sidor Pages	Ritn nr Drawing no	Forts Cont
			ABB		2TLC010007T0105	

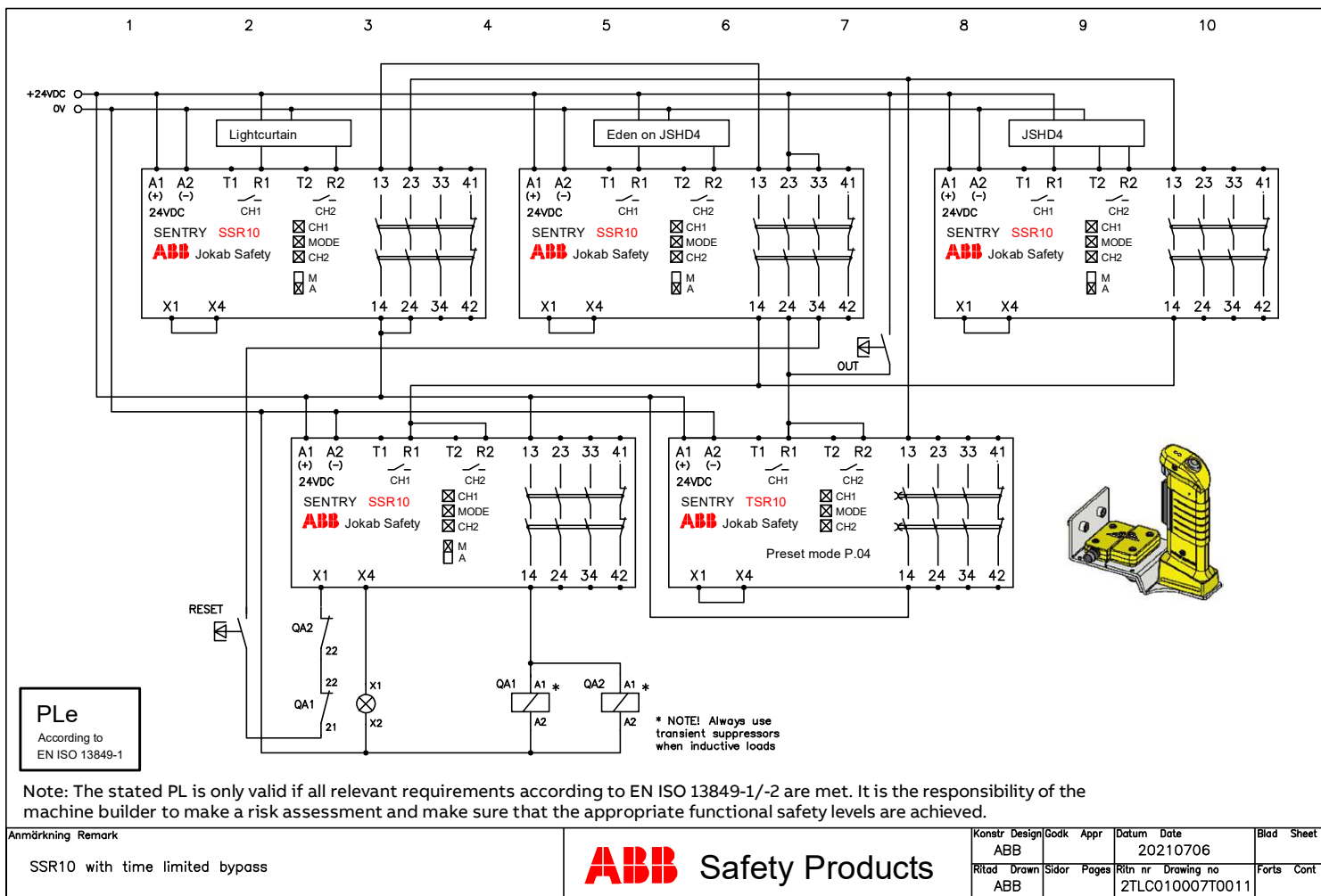


PLe
According to
EN ISO 13849-1

Note: The stated PL is only valid if all relevant requirements according to EN ISO 13849-1/-2 are met. It is the responsibility of the machine builder to make a risk assessment and make sure that the appropriate functional safety levels are achieved.

Anmärkning Remark	SSR10/USR10 with HD5-S-111	 Safety Products	Konstr Design	Godk Appr	Datum Date	Blad Sheet
			ABB		20210706	
			Ritad Drawn	Sidor Pages	Ritn nr Drawing no	Forts Cont
			ABB		2TLC010007T0106	



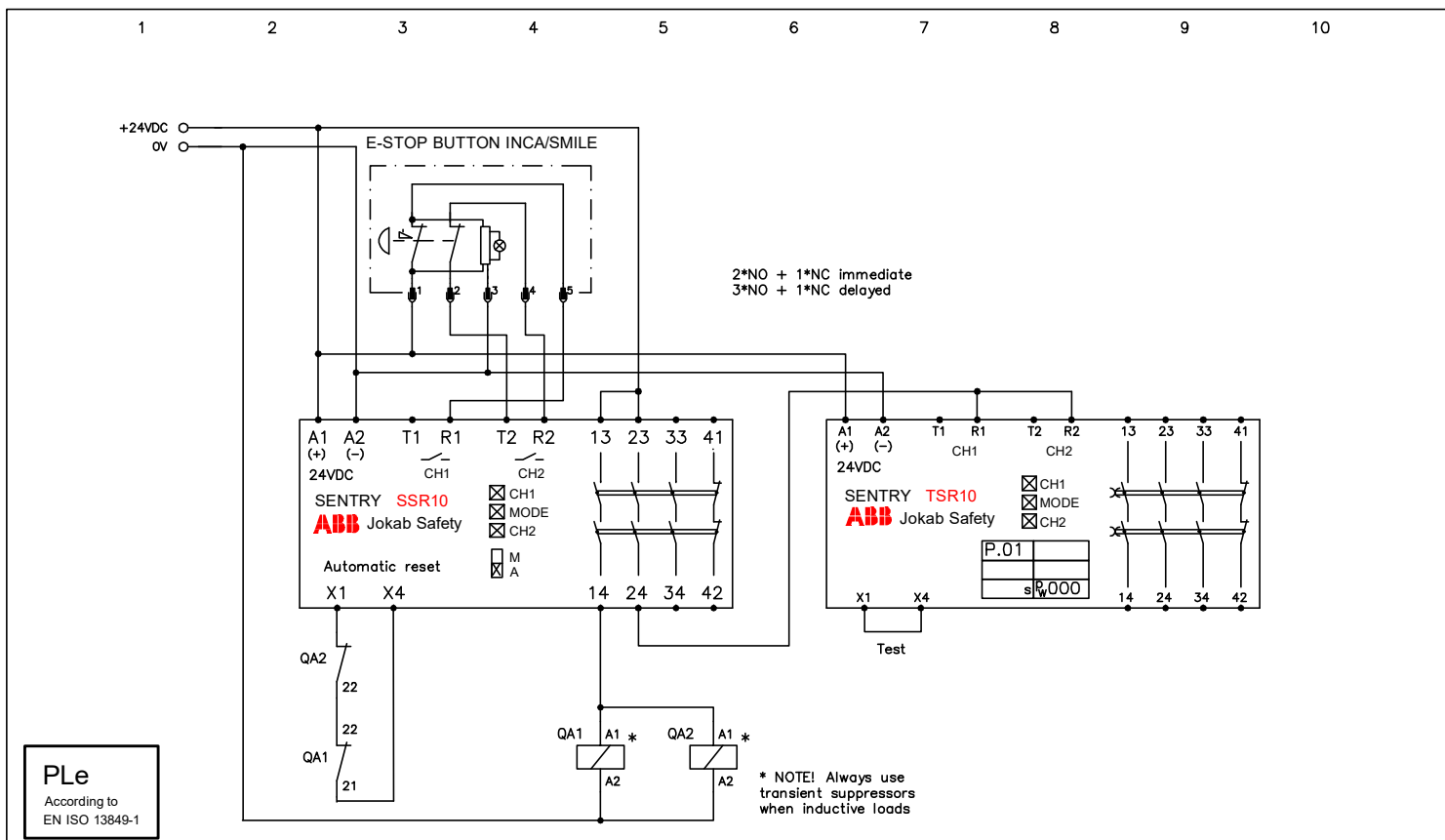


PLe
According to
EN ISO 13849-1

Note: The stated PL is only valid if all relevant requirements according to EN ISO 13849-1/-2 are met. It is the responsibility of the machine builder to make a risk assessment and make sure that the appropriate functional safety levels are achieved.

Anmärkning Remark	Konstr Design	Godk Appr	Datum Date	Blad Sheet
SSR10 with time limited bypass	ABB		20210706	
	Ritad Drawn	Sidor Pages	Ritn nr Drawing no	Forts Cont
	ABB		2TLC010007T0011	





Note: The stated PL is only valid if all relevant requirements according to EN ISO 13849-1/-2 are met. It is the responsibility of the machine builder to make a risk assessment and make sure that the appropriate functional safety levels are achieved.

Anmärkning Remark SSR10 expansion TSR10	ABB Safety Products	Konstr Design	Godk Appr	Datum Date	Blad Sheet
		ABB		20210706	
		Ritad Drawn	Sidor Pages	Ritn nr Drawing no	Forts Cont
		ABB		2TLC010007T0007	

